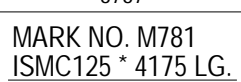
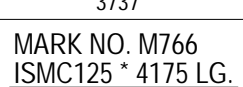
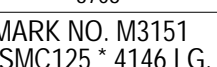
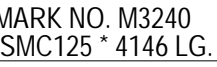
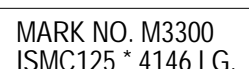
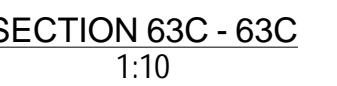
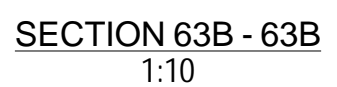



No. 1, Marked MH1-VB63



	12
21	

[illegible]

		भारत ही लायव्हर्लस लिमिटेड BHARAT HEAVY ELECTRICALS LTD. FSIP, JAGDISHPUR	
	NAME	DATE	DRAWING TITLE :-
DRN	SP	27.12.2022	DETAIL DRAWINGS FOR LS STOCK YARD SHED
			DRAWING DESCRIPTION :-
CHD	KJ	27.12.2022	DETAIL DRAWINGS FOR VBR-(PART-2) - MH-1
APPD	YG	27.12.2022	DRAWING DOCUMENT NO. :- PAT-IP-FGD-LSSY-999-1011
			SHEET - 02 OF 10
15			REV. 00

01. ALL DIMENSIONS ARE IN MILLIMETERS & LEVELS ARE IN METER U.N.O.
02. THIS DRAWING IS NOT TO BE SCALED, ONLY WRITTEN DIMENSIONS ARE TO BE FOLLOWED.
03. ALL BUTT WELDS SHALL BE OF FULL PENETRATION.
04. Use 10.9 BOLT GRADE UNLESS NOTED OTHERWISE MENTIONED IN ERECTION DRAWING.

00	ISSUE FOR CONSTRUCTION	SP	KJ	YG	27.12.2022
No	DESCRIPTION	DRN	CHECKED	APPROVED	DATE

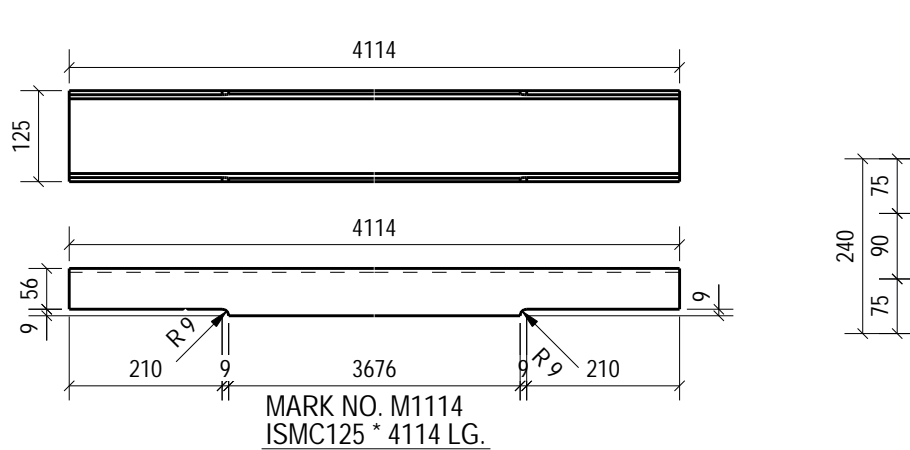
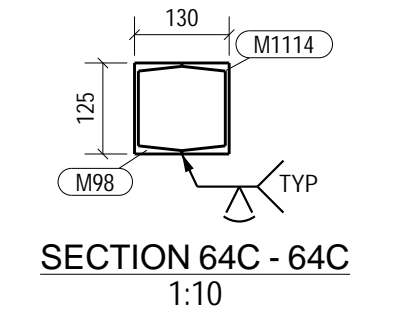
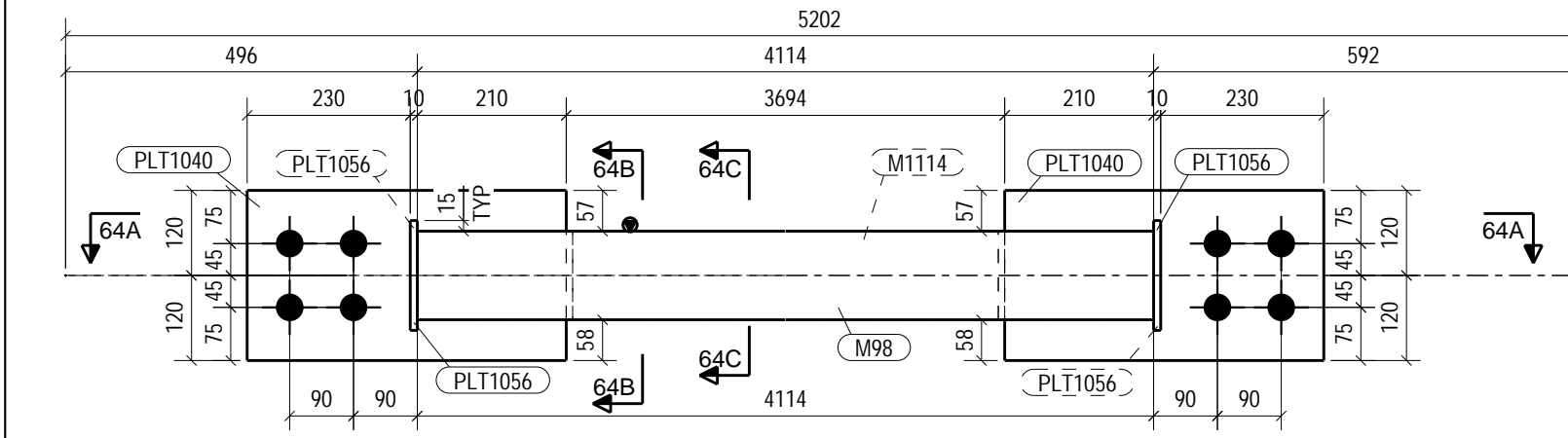
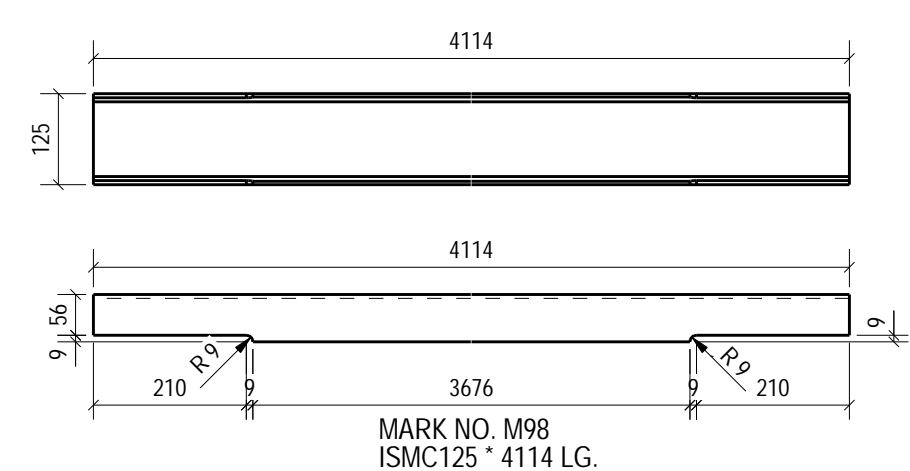
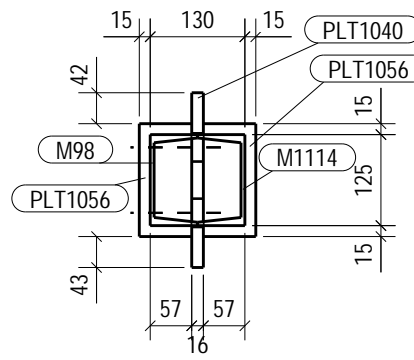
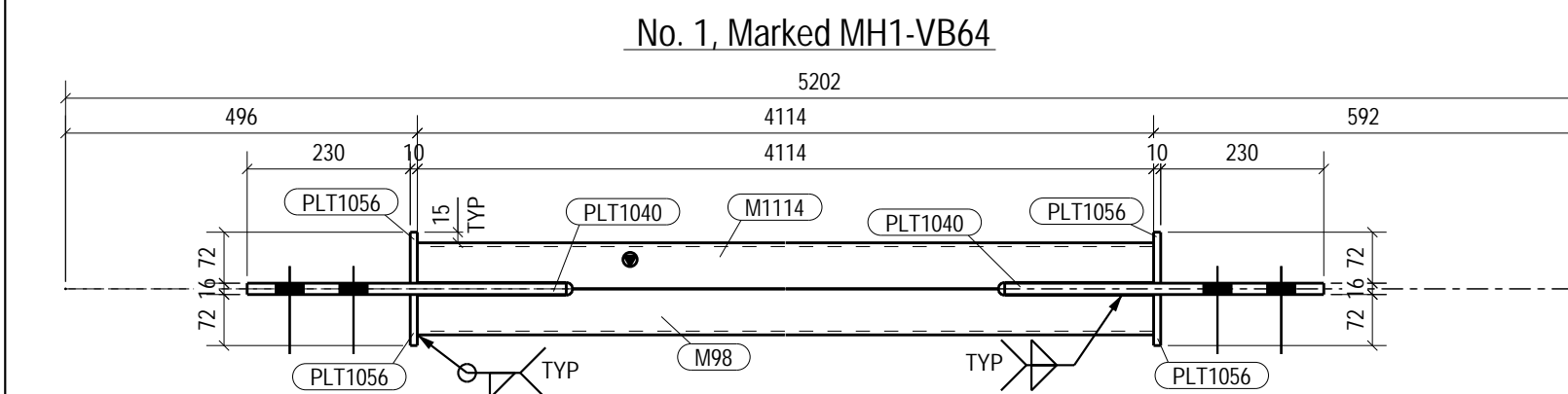
PAT-IP-FGD-LSSY-100-1001	MARKING DRAWINGS OF LS STOCK YARD SHED - MH-1	00
DRAWING NO.	DRAWING TITLE	REV

EPC CONTRACTOR:	BHARAT HEAVY ELECTRICALS LTD POWER SECTOR WESTERN REGION, NAGPUR	SCALE:- AS SHOWN
-----------------	--	---------------------

FABRICATION CONTRACTOR:	
-------------------------	--

SIZE-A

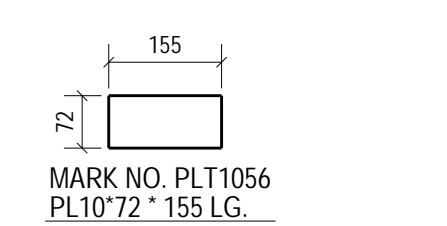
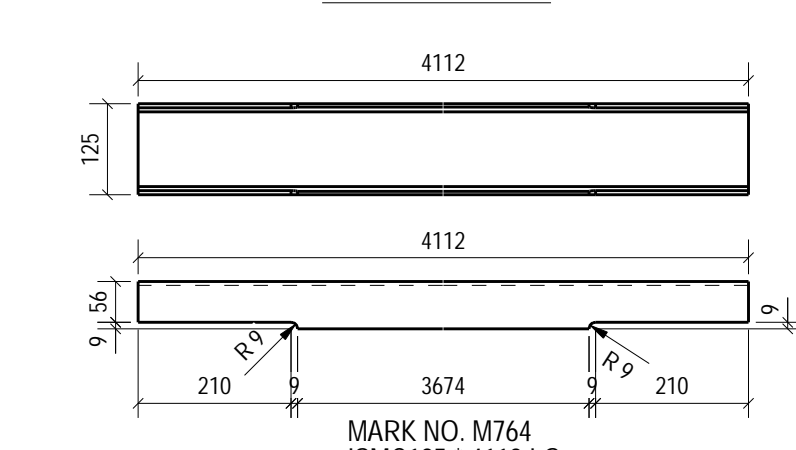
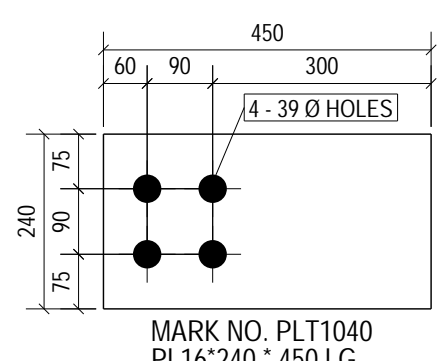
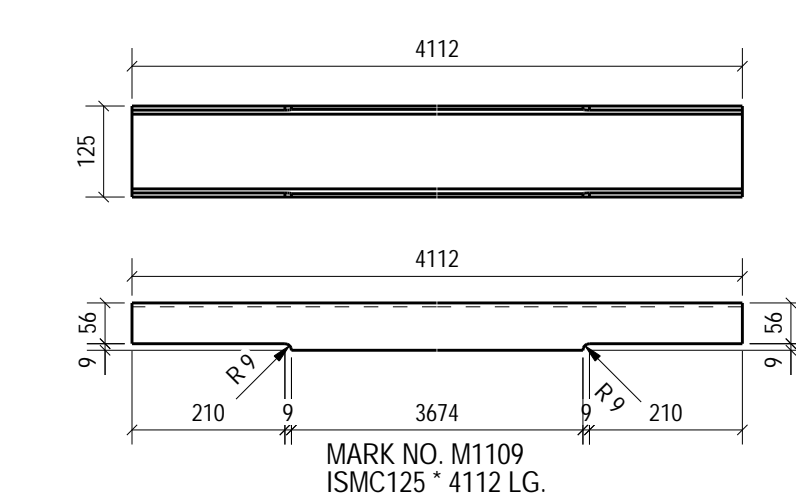
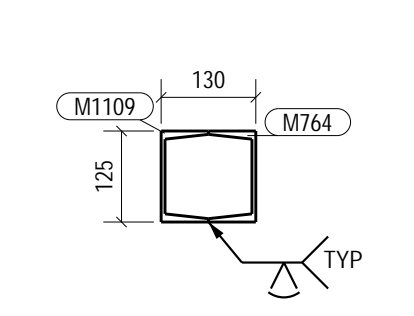
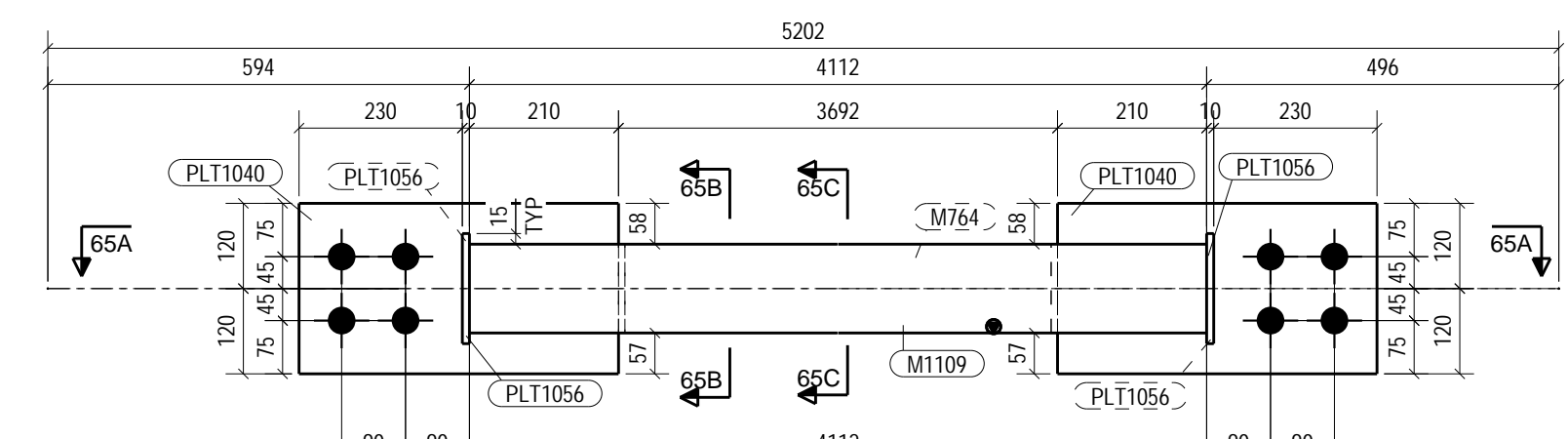
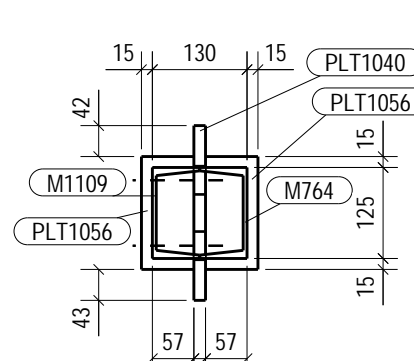
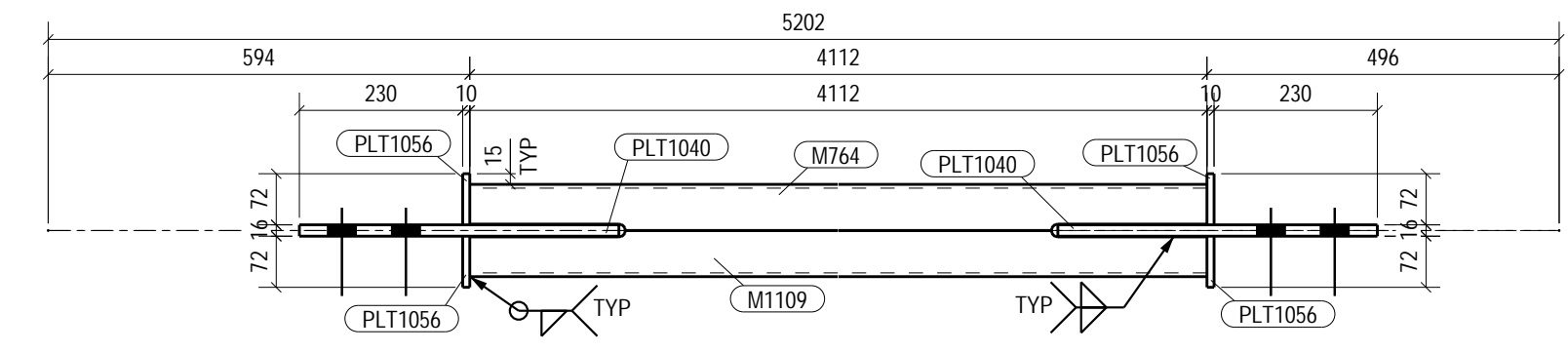
GRID LOCATION		
MH1-VB64	24-25/B	+22.360
MH1-VB65	24-25/B	+22.360
MH1-VB67	24-25/B	+13.849
MH1-VB66	24-25/C	+13.849



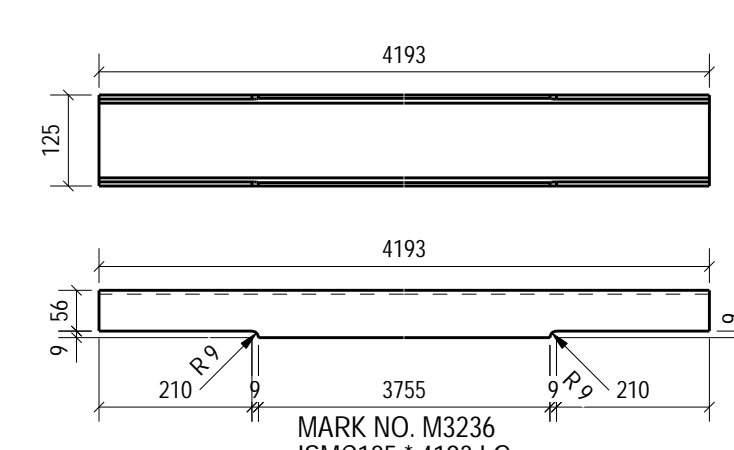
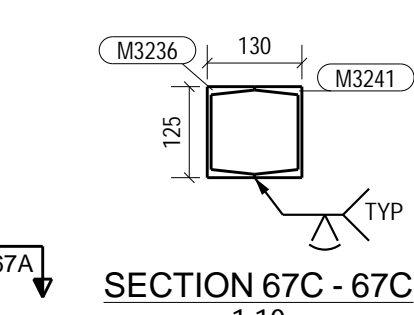
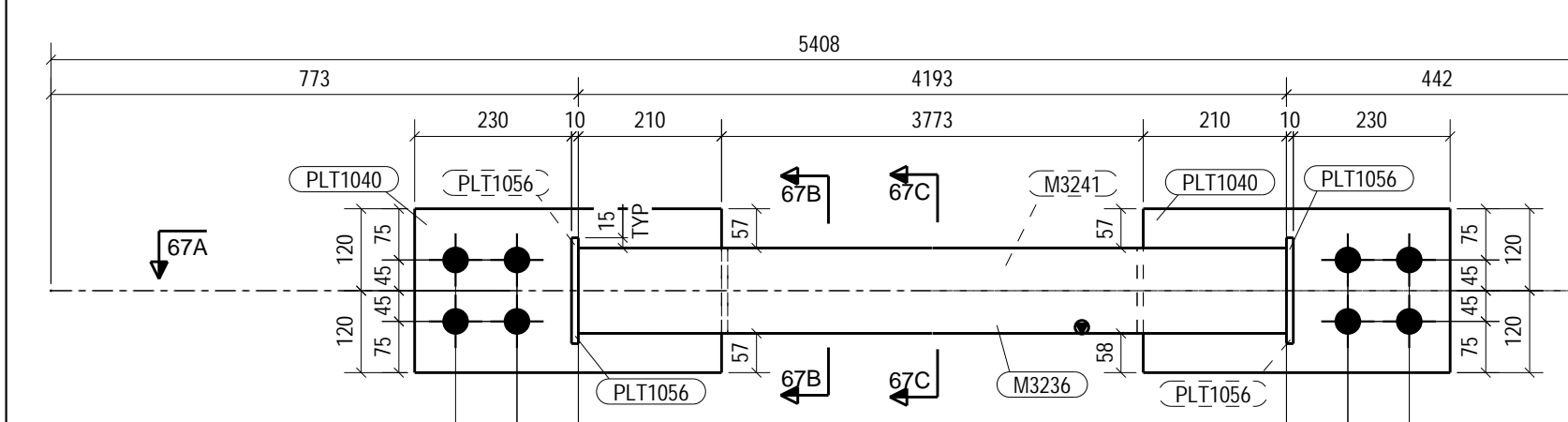
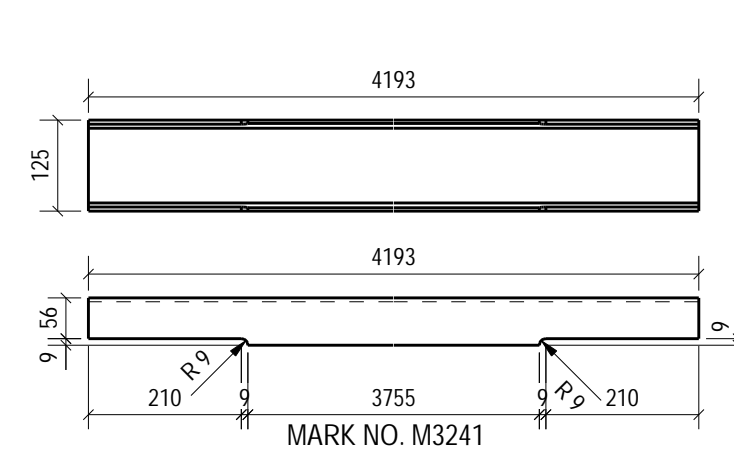
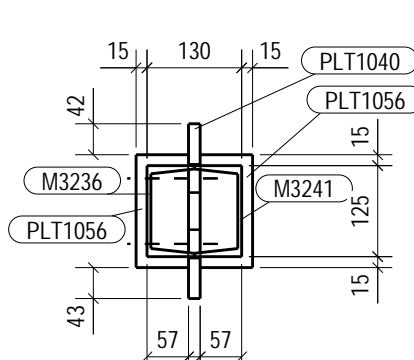
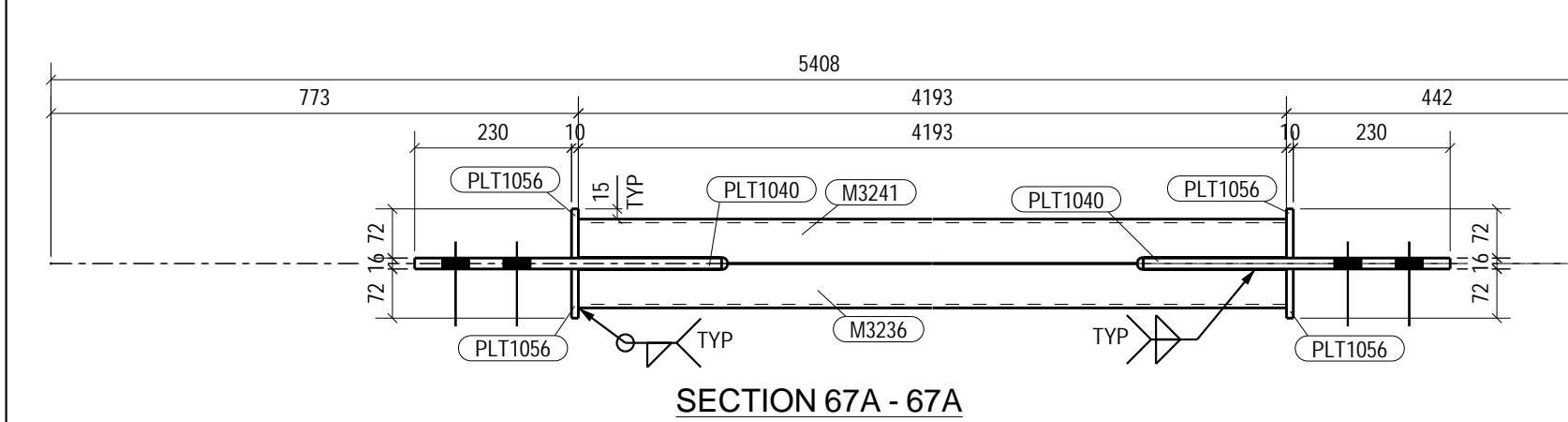
SUMMARY OF STEEL		
SR. No.	DESCRIPTION	TOTAL WT.
1	ISMC125	435.57
2	PLT 10 THK	14.02
3	PLT 16 THK	108.52
TOTAL IN KGS		558.11

FIELD BOLT SUMMARY				
TOTAL QTY	UNIT QTY	BOLT DIA	BOLT GRADE	LENGTH
32	32	36	10.9	100

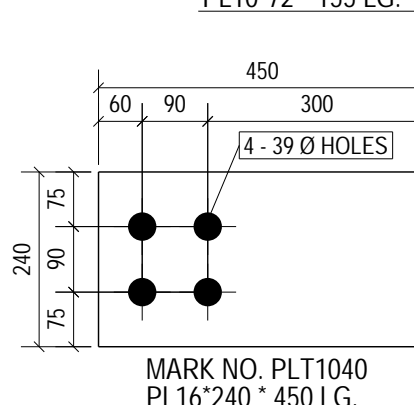
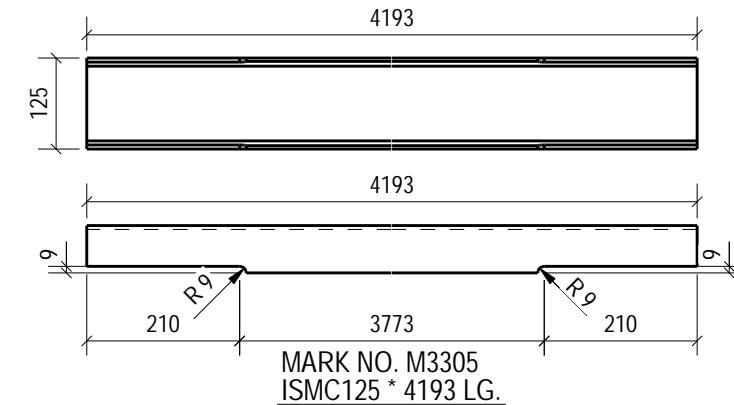
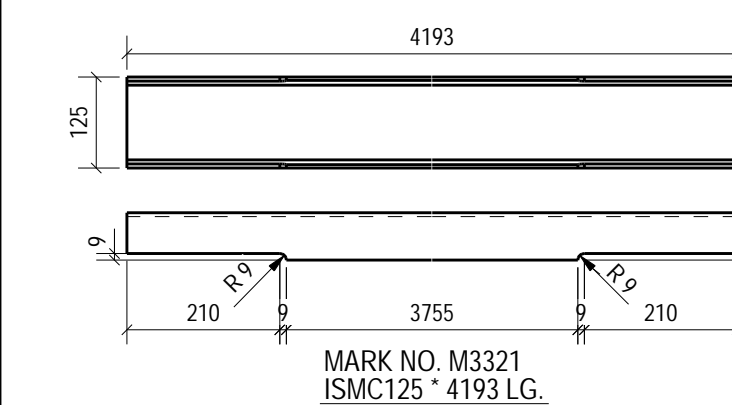
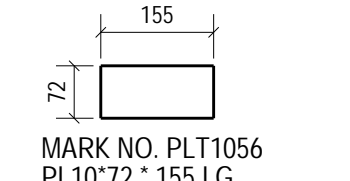
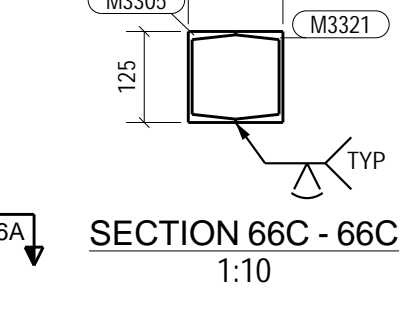
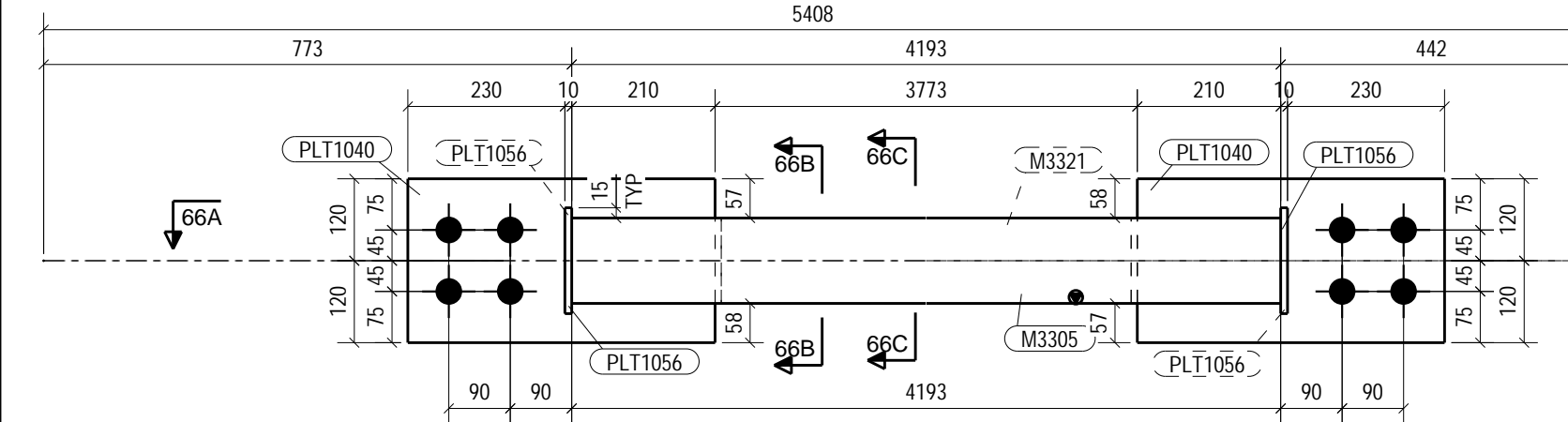
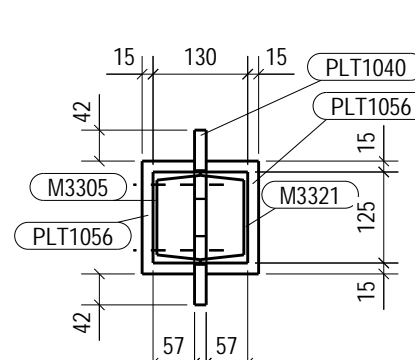
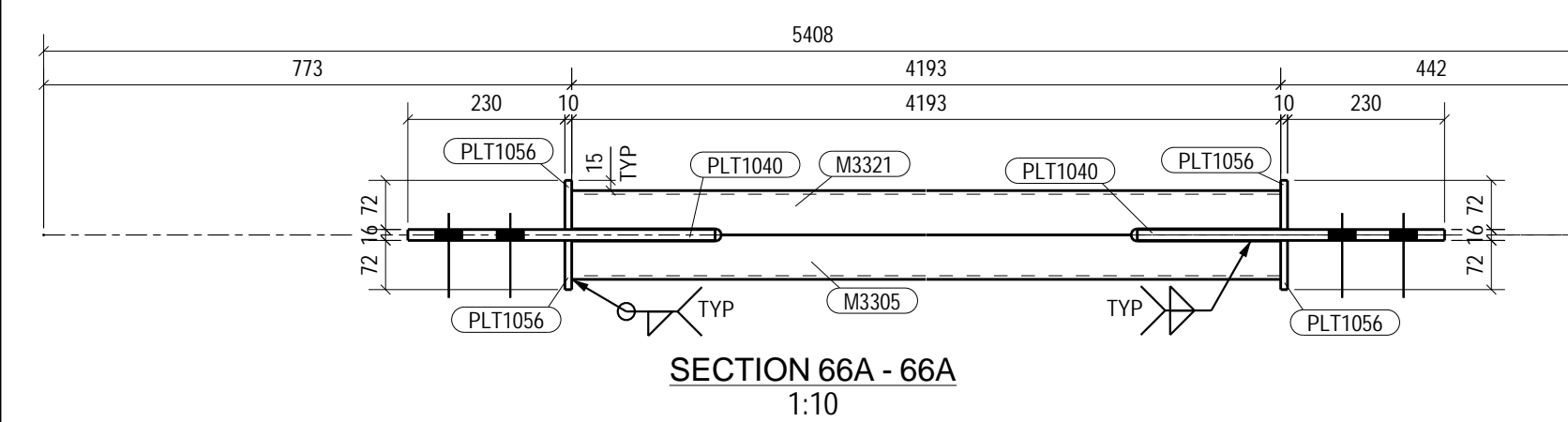
BILL OF MATERIALS									
ERECTION MARK.	ITEM NO.	MATL. SPCL.	SECTION	LENGTH IN mm.	REQD. NOS.	WEIGHT IN KGS. UNIT WT.	TOTAL WT.	ERECTION NOS.	WT. FOR ALL EREC.
MH1-VB64	M98	E200 AB	ISMC125	4113.8	1	53.93	53.93	1	138.49
	M1114	E200 AB	ISMC125	4113.8	1	53.93	53.93		
	PLT1040	E200 AB	PL16'240	450.0	2	13.56	27.13		
	PLT1056	E200 AB	PL10'72	155.0	4	0.88	3.50		
MH1-VB65	M1109	E200 AB	ISMC125	4112.3	1	53.91	53.91		
	M764	E200 AB	ISMC125	4112.3	1	53.91	53.91		
	PLT1040	E200 AB	PL16'240	450.0	2	13.56	27.13		
	PLT1056	E200 AB	PL10'72	155.0	4	0.88	3.50		
MH1-VB66	M3305	E200 AB	ISMC125	4193.3	1	54.97	54.97		
	M3321	E200 AB	ISMC125	4193.3	1	54.97	54.97		
	PLT1040	E200 AB	PL16'240	450.0	2	13.56	27.13		
	PLT1056	E200 AB	PL10'72	155.0	4	0.88	3.50		
MH1-VB67	M3236	E200 AB	ISMC125	4193.3	1	54.97	54.97		
	M3241	E200 AB	ISMC125	4193.3	1	54.97	54.97		
	PLT1040	E200 AB	PL16'240	450.0	2	13.56	27.13		
	PLT1056	E200 AB	PL10'72	155.0	4	0.88	3.50		
GRAND TOTAL									558.11



No. 1, Marked MH1-VB65



No. 1, Marked MH1-VB67



No. 1, Marked MH1-VB66

NOTES:

- ALL DIMENSIONS ARE IN MILLIMETERS & LEVELS ARE IN METER U.N.O.
- THIS DRAWING IS NOT TO BE SCALED, ONLY WRITTEN DIMENSIONS ARE TO BE FOLLOWED.
- ALL BUTT WELDS SHALL BE OF FULL PENETRATION.
- Use 10.9 BOLT GRADE UNLESS NOTED OTHERWISE MENTIONED IN ERECTION DRAWING.

MINIMUM WELD SIZE FOR VARIOUS PLATE				
PLATE SIZE	8 mm & 10 mm	12 mm	16 mm & 20 mm	25 mm
WELD SIZE	6 mm	10 mm	12 mm	16 mm

00	ISSUE FOR CONSTRUCTION	SP	KJ	YG	27.12.2022
No	DESCRIPTION	DRN	CHECKED	APPROVED	DATE

PAT-IP-FGD-LSSY-100-1001		MARKING DRAWINGS OF LS STOCK YARD SHED - MH-1		00
DRAWING NO.		DRAWING TITLE		REV

REFERENCE DOCUMENTS / DRAWINGS

CUSTOMER/PROJECT: NTPC-3x800MW PATRATU SUPER THERMAL POWER PROJECT

EPC CONTRACTOR: BHARAT HEAVY ELECTRICALS LTD POWER SECTOR WESTERN REGION, NAGPUR SCALE:- AS SHOWN

DETAILER: BEC BANKAPUR ENGINEERS & CONSULTANTS PVT. LTD.

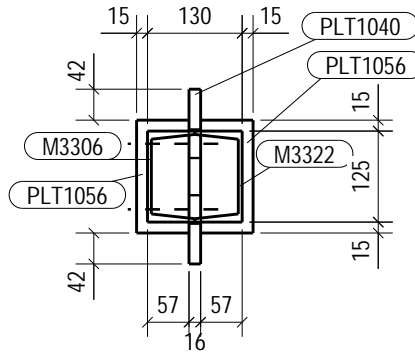
FABRICATION CONTRACTOR:

भारत ही स्टेल्स लिमिटेड
BHARAT HEAVY ELECTRICALS LTD.
FSIP, JAGDISHPUR

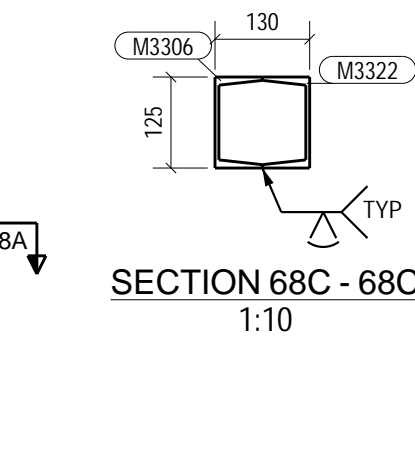
NAME	DATE	DRAWING TITLE
DRN	SP	27.12.2022
CHD	KJ	27.12.2022
APPD	YG	27.12.2022

DRAWING DESCRIPTION		DETAIL DRAWINGS FOR VBR (PART-2) - MH-1	
DRAWING DOCUMENT NO. - PAT-IP-FGD-LSSY-999-1011		SHEET - 03 OF 10	

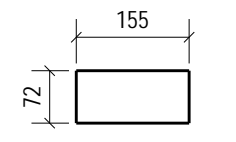
REV.: 00



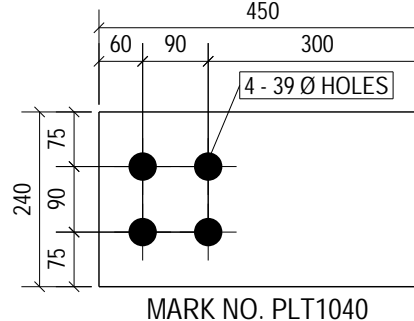
SECTION 68B - 68E



SECTION 68A - 68A



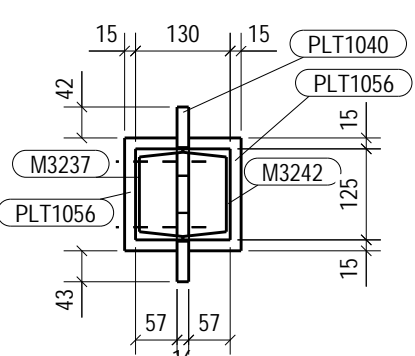
MARK NO. M3306
ISMCI25 * 4212 LG



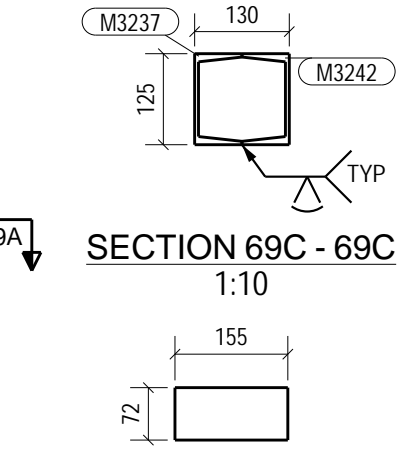
MARK NO. M3322
ISMCI25 * 4212 LG

FIELD BOLT SUMMARY					
TOTAL QTY	UNIT QTY	BOLT DIA	BOLT GRADE	LENGTH	REMARK
24	24	36	10.9	100	Site
16	16	36	10.9	110	Site

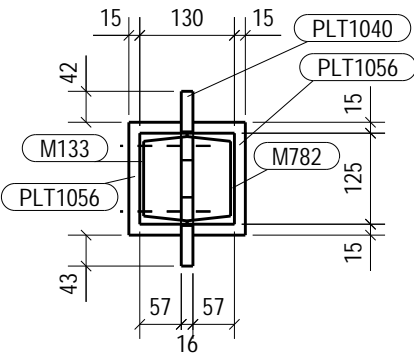
BILL OF MATERIALS									
ERECTION MARK	ITEM NO.	MATL. SPCN.	SECTION	LENGTH IN mm.	REQD. NOS.	WEIGHT IN KGS.		ERECTION NOS.	WT. FOR ALL ERECTION
						UNIT	TOTAL WT.		
MH1-1989	M3306	E250 A/B	ISMC125	4212.4	1	55.22	55.22	141.08	141.08
	M3322	E250 A/B	ISMC125	4212.4	1	55.22	55.22		
	PLT1040	E250 A/B	PL16*240	450.0	2	13.56	27.13		
	PLT1056	E250 A/B	PL10*72	155.0	4	0.88	3.50		
MH1-1989	M3371	E250 A/B	ISMC125	4212.4	1	55.22	55.22	141.08	141.08
	M3242	E250 A/B	ISMC125	4212.4	1	55.22	55.22		
	PLT1040	E250 A/B	PL16*240	450.0	2	13.56	27.13		
	PLT1056	E250 A/B	PL10*72	155.0	4	0.88	3.50		
MH1-1970	M3278	E250 A/B	ISMC250	2989.5	1	91.52	91.52	296.79	296.79
	M3282	E250 A/B	ISMC250	2989.5	1	91.52	91.52		
	PLT786	E250 A/B	PL25*420	640.0	2	52.75	105.50		
	PLT1087	E250 A/B	PL10*78	300.0	4	2.06	8.24		
MH1-1971	M1133	E250 A/B	ISMC125	4173.5	1	54.71	54.71	140.06	140.06
	M762	E250 A/B	ISMC125	4173.5	1	54.71	54.71		
	PLT1040	E250 A/B	PL16*240	450.0	2	13.56	27.13		
	PLT1056	E250 A/B	PL10*72	155.0	4	0.88	3.50		
GRAND TOTAL									719.01



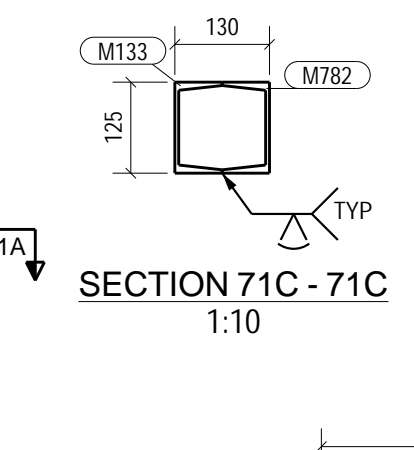
SECTION 69B - 69B



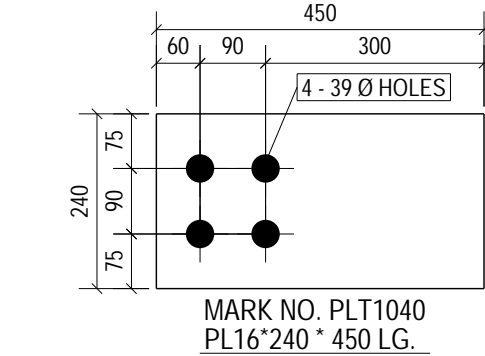
No. 1, Marked MH1-VB69



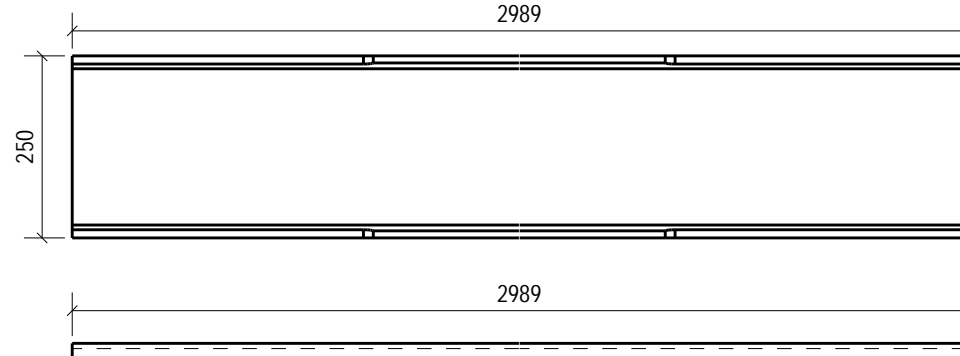
SECTION 71B - 71B



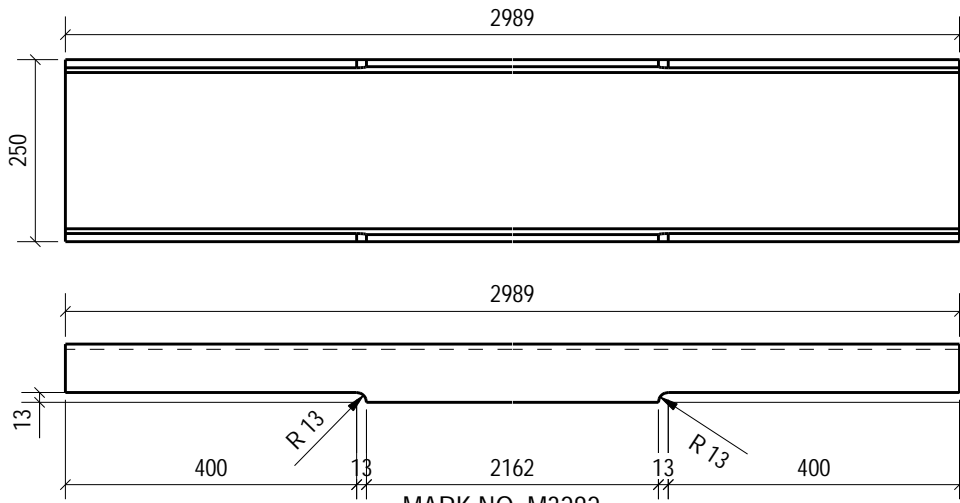
No. 1, Marked MH1-VB71



6*240 * 450 LG.



SECTION 70B - 70E



SECTION 70C - 70C

NOTES:

01. ALL DIMENSIONS ARE IN MILLIMETERS & LEVELS ARE IN METER U.N.O.
02. THIS DRAWING IS NOT TO BE SCALED, ONLY WRITTEN DIMENSIONS ARE TO BE FOLLOWED.
03. ALL BUTT WELDS SHALL BE OF FULL PENETRATION.
04. Use 10.9 BOLT GRADE UNLESS NOTED OTHERWISE MENTIONED IN ERECTION DRAWING.

MINIMUM WELD SIZE FOR VARIOUS PLATE							
PLATE SIZE	8 mm & 10 mm	12 mm	16 mm & 20 mm	25 mm	28 mm & 32 mm	36 mm & 40 mm	45 mm & 50 mm
WELD SIZE	6 mm	10 mm	12 mm	16 mm	20 mm	25 mm	35 mm

00	ISSUE FOR CONSTRUCTION	SP	KJ	YG	27.12.2022
No	DESCRIPTION	DRN	CHECKED	APPROVED	DATE

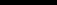
PAT-IP-FGD-LSSY-100-1001	MARKING DRAWINGS OF LS STOCK YARD SHED - MH-1	00
DRAWING NO	DRAWING TITLE	REV

CUSTOMER/PROJECT:
NTPC-3x800MW PATRATU SUPER THERMAL POWER PROJECT

EPC CONTRACTOR: **BHARAT HEAVY ELECTRICALS LTD** SCALE:-
POWER SECTOR WESTERN REGION, NAGPUR AS SHOWN

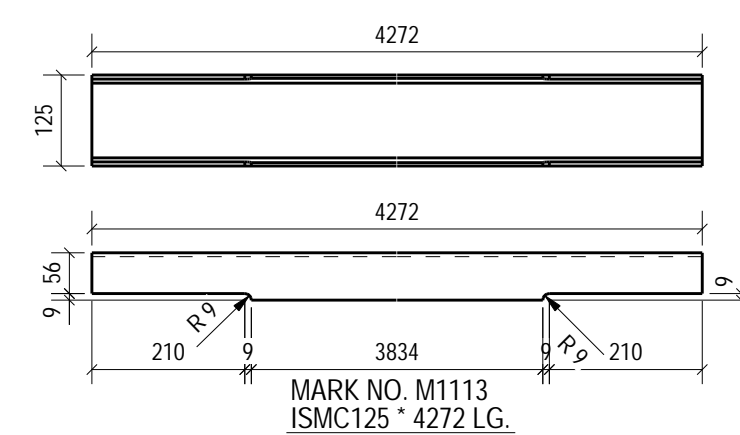
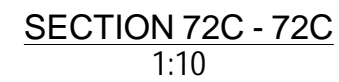
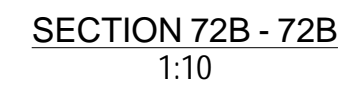
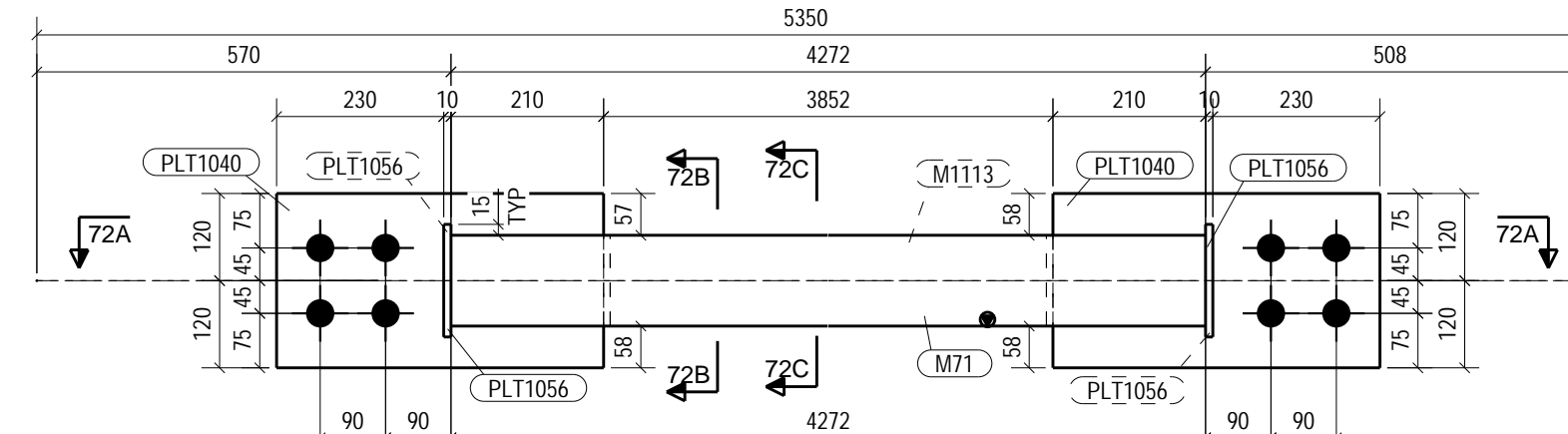
DETAILER: **BEL** BANKAPUR ENGINEERS & CONSULTANTS PVT. LTD.

FABRICATION CONTRACTOR:

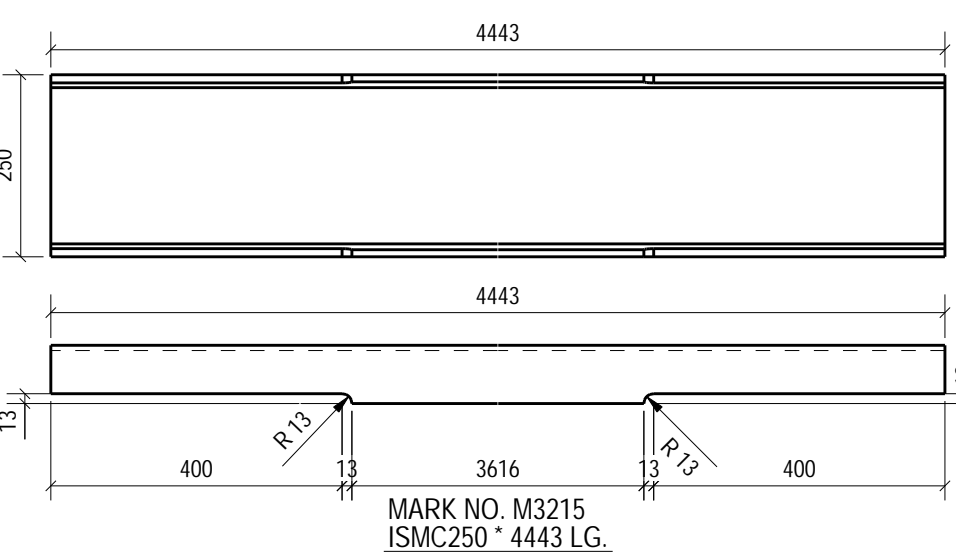
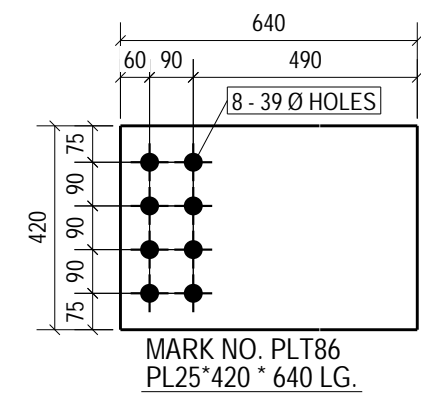
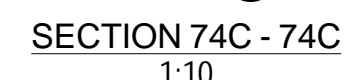
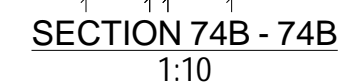
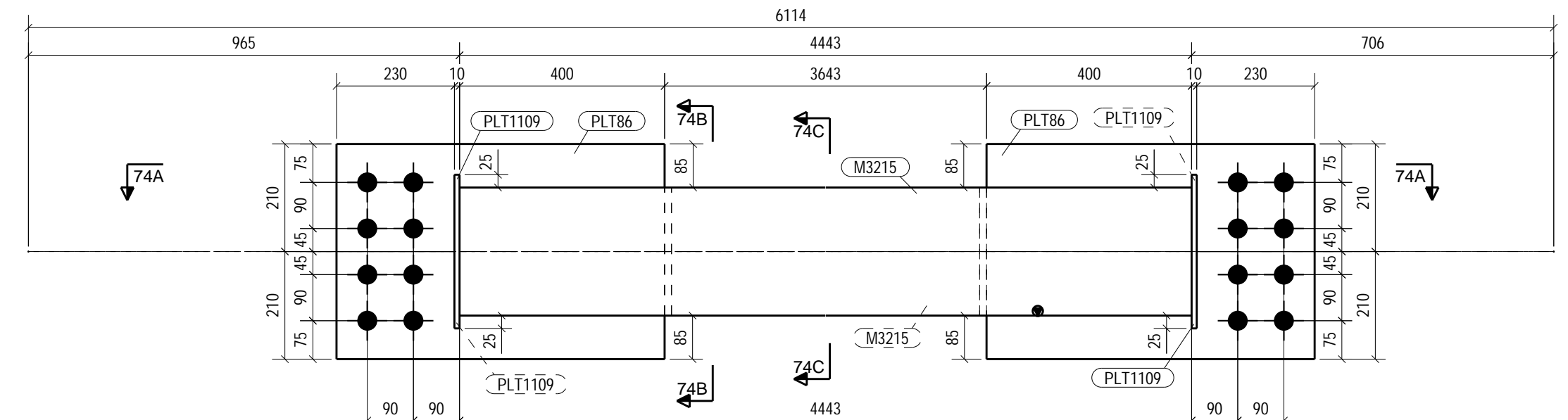
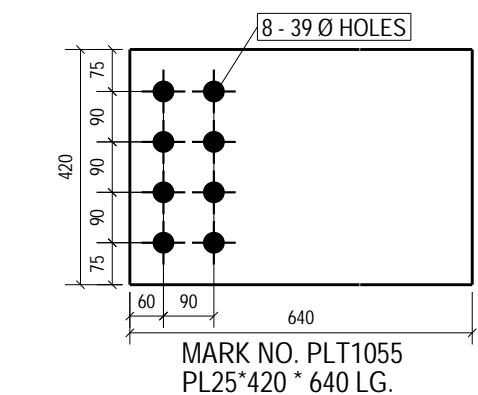
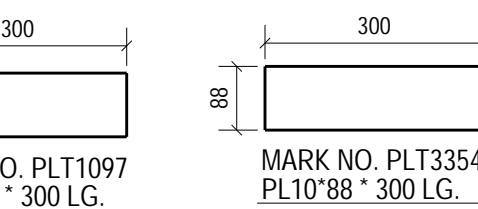
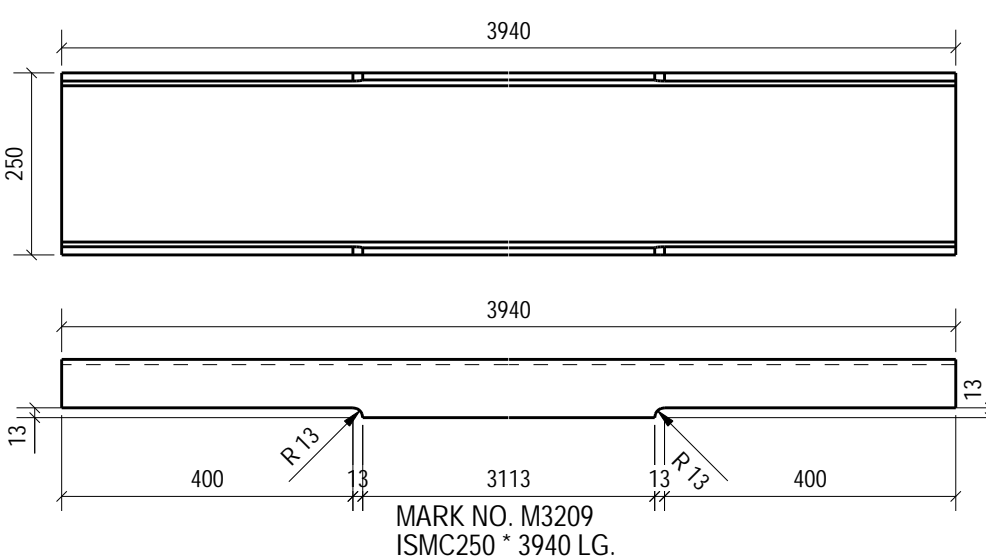
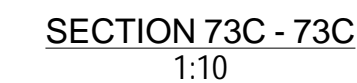
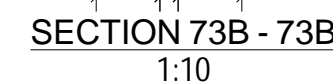
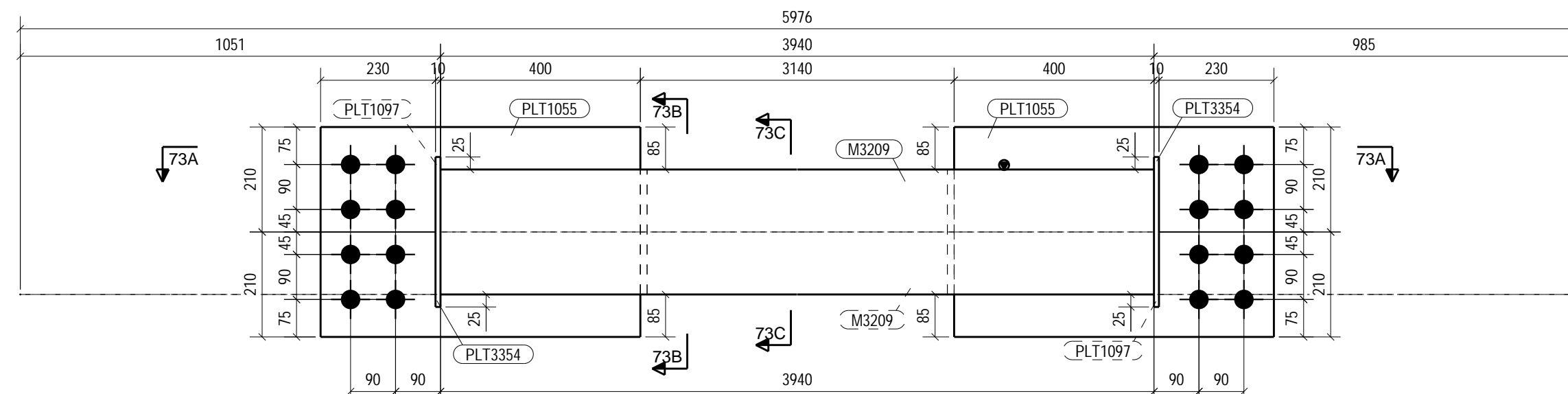
 **BHARAT HEAVY ELECTRICALS LTD.**
FSIP, JAGDISHPUR

	NAME	DATE	DRAWING TITLE :-		
DRN	SP	27.12.2022	DETAIL DRAWINGS FOR LS STOCK YARD SHED		
			DRAWING DESCRIPTION :-		
CHD	KJ	27.12.2022	DETAIL DRAWINGS FOR VBR-(PART-2) - MH-1		
APPD	YG	27.12.2022	DRAWING DOCUMENT NO. :-		
			PAT.IP.FG.DJ.SSY-999-1011		
			SHEET	04 OF 10	REV. : 00

9178 • J. Neurosci., September 24, 2008 • 28(39):9172–9180



15				16					
BILL OF MATERIALS									
ERECTION MARK.	ITEM NO.	MATL. SPCN.	SECTION	LENGTH IN mm.	REQD. NOS.	WEIGHT IN KGS.		EREC. NOS.	WT. ALL EREC.
						UNIT WT.	TOTAL WT.		
MH1-1B72							142.65		142.65
	M71	E250 AB	ISM2C15	4272.3	1	56.01	56.01		
	M113	E250 AB	ISM2C15	4272.3	1	56.01	56.01		
	PL71040	E250 AB	PL107240	450.0	2	13.56	27.13		
	PL71056	E250 AB	PL10772	150.0	4	0.88	3.50		
MH1-1B73							355.02	1	355.02
	M2039	E250 AB	ISM2C250	3940.4	1	120.64	120.64		
	M2039	E250 AB	ISM2C250	3940.4	1	120.64	120.64		
	PL71055	E250 AB	PL25740	640.0	2	52.75	105.50		
	PL71087	E250 AB	PL10788	300.0	2	2.06	4.12		
	PL73354	E250 AB	PL10788	300.0	2	2.06	4.12		
MH1-1B74							385.76	1	385.76
	M2125	E250 AB	ISM2C250	4442.5	1	136.01	136.01		
	M2125	E250 AB	ISM2C250	4442.5	1	136.01	136.01		
	PL71068	E250 AB	PL25740	640.0	2	52.75	105.50		
	PL71109	E250 AB	PL10788	300.0	4	2.06	8.24		
GRAND TOTAL								883.43	



MINIMUM WELD SIZE FOR VARIOUS PLATE							
PLATE SIZE	8 mm & 10 mm	12 mm	16 mm & 20 mm	25 mm	28 mm & 32 mm	36 mm & 40 mm	45 mm & 50 mm
WELD SIZE	6 mm	10 mm	12 mm	16 mm	20 mm	25 mm	25 mm

REFERENCE DOCUMENTS / DRAWINGS

CUSTOMER/PROJECT:
NTPC 3x800MW PATRATHI SUPER THERMAL POWER PROJECT

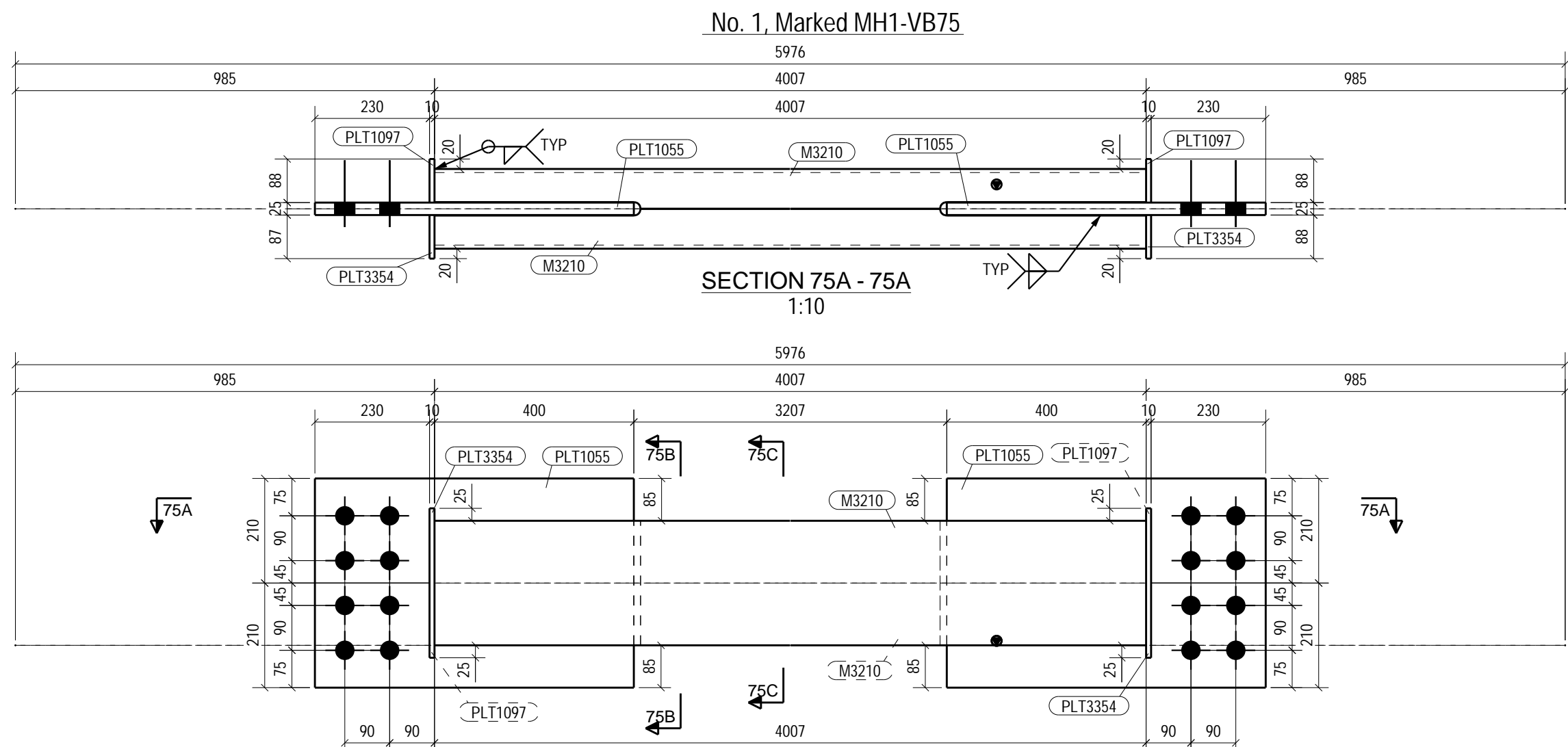
POWER SECTOR WESTERN REGION, NAGPUR		THE DRAWING
DETAILER: BEC BANKAPUR ENGINEERS & CONSULTANTS PVT. LTD.		
ELECTRICAL WORKS		

	NAME	DATE	DRAWING TITLE :- DETAIL DRAWINGS FOR LS STOCK YARD SHED

APPD	YG	27.12.2022	PAT-IP-FGD-LSSY-999-1011	SHEET - 05 OF 10	REV.: 00
------	----	------------	--------------------------	------------------	----------

SIZE-A

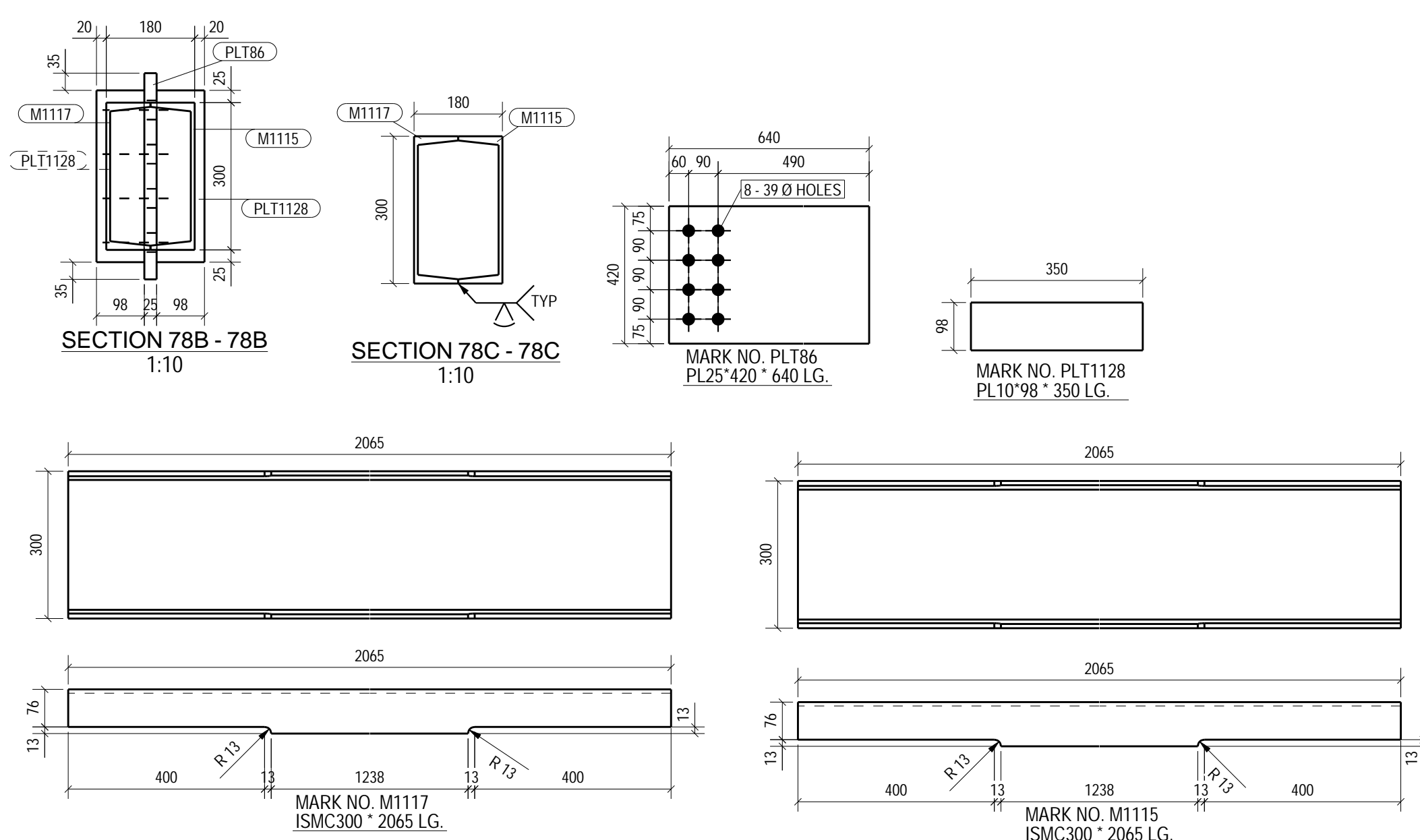
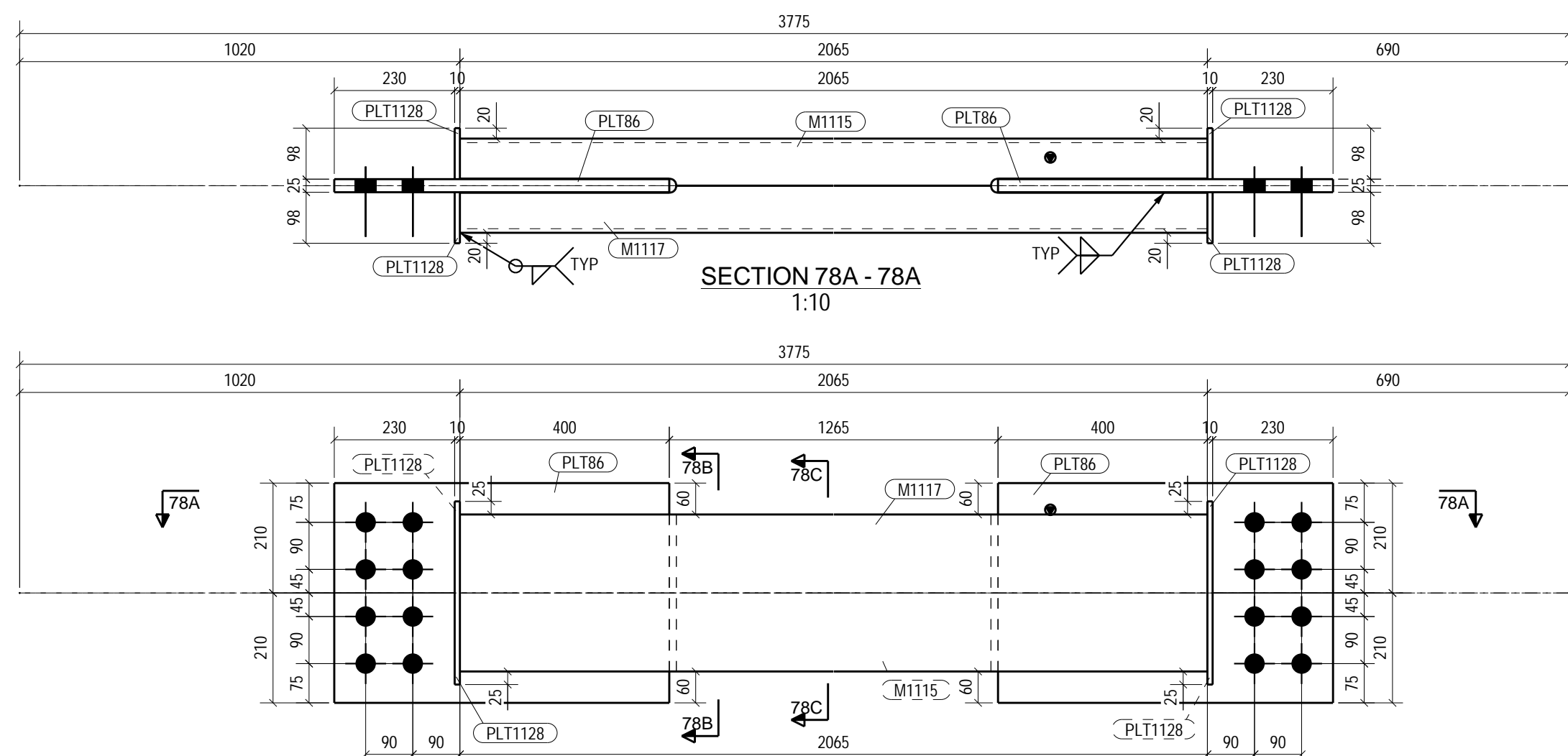
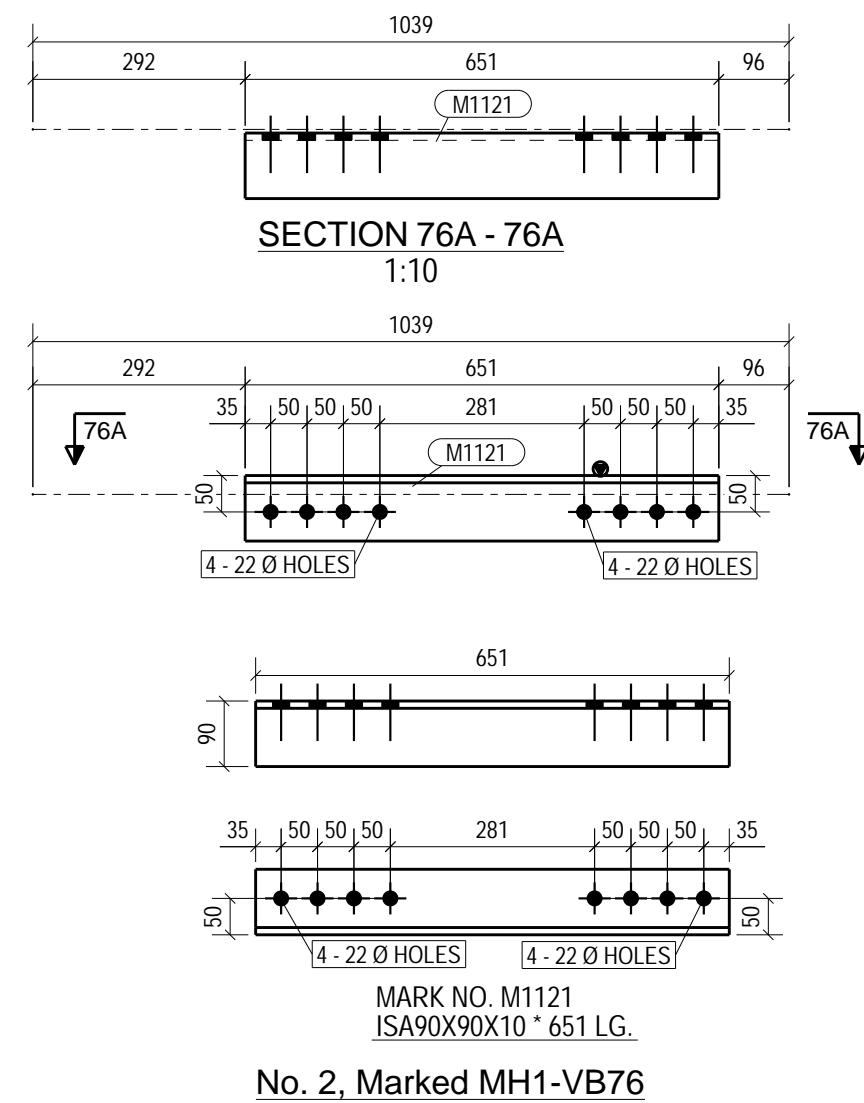
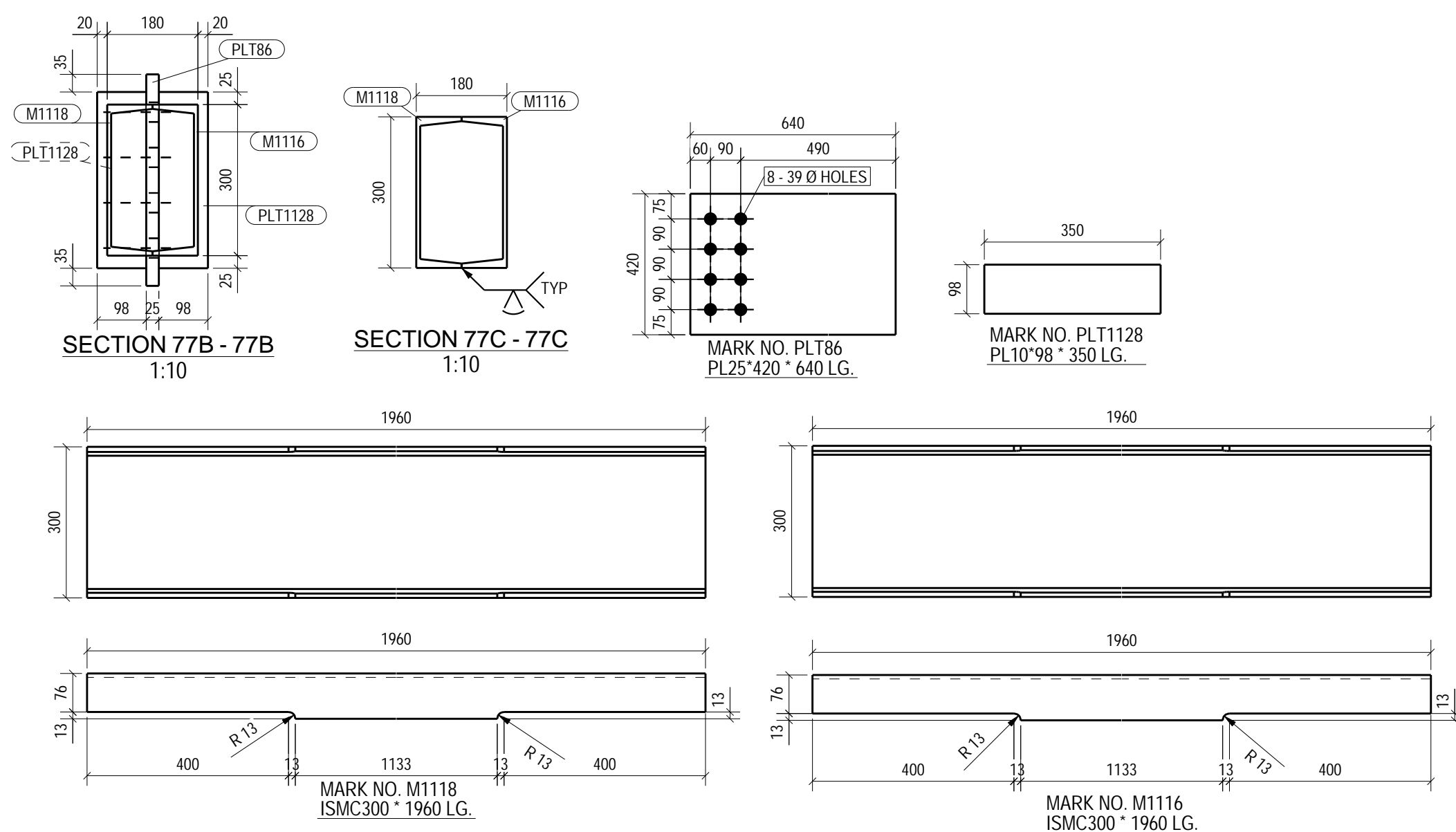
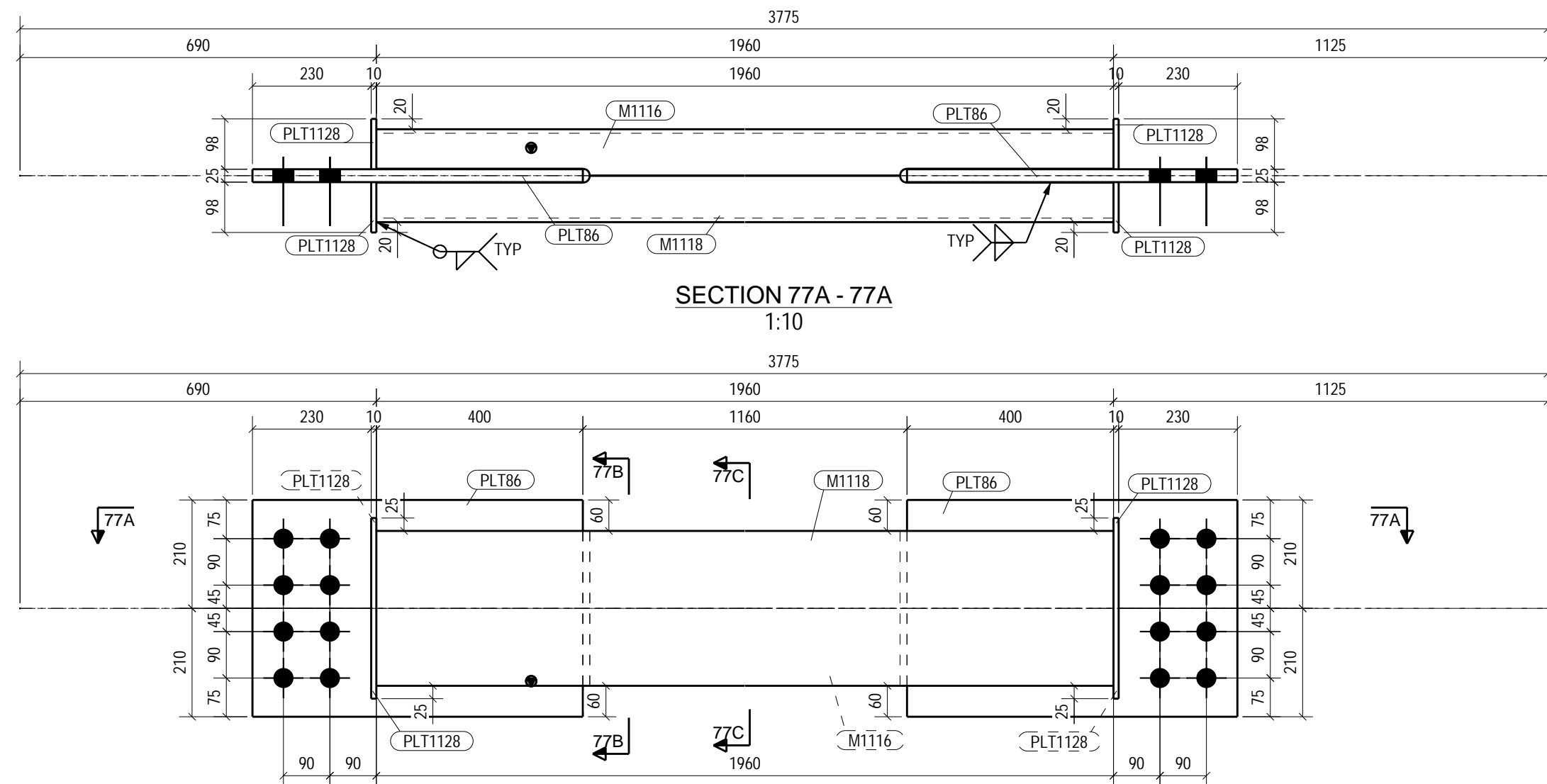
GRID LOCATION		
MH1-VB76	22C-X	+23.228
MH1-VB76	22X-B	+23.228
MH1-VB77	25B-A	+9.260
MH1-VB78	25B-A	+9.260
MH1-VB75	25C-X	+17.560



SUMMARY OF STEEL		
SR. No.	DESCRIPTION	TOTAL WT.
1	ISA90X90X10	17.36
2	ISMC250	245.33
3	ISMC300	292.58
4	PLT 10 THK	28.67
5	PLT 25 THK	316.51
TOTAL IN KGS.		901.46

FIELD BOLT SUMMARY				
TOTAL QTY	UNIT QTY	BOLT DIA	BOLT GRADE	LENGTH
16	8	20	10.9	65
48	48	36	10.9	110

BILL OF MATERIALS									
ERECTION MARK.	ITEM NO.	MATL. SPCLN.	SECTION	LENGTH IN mm.	REQD. NOS.	WEIGHT IN KGS. UNIT WT.	TOTAL WT.	ERE. NOS.	WT. FOR ALL EREC.
MH1-VB75	M3210	E250 AB	ISMC250	4006.8	1	122.66	122.66	1	359.07
	M3210	E250 AB	ISMC250	4006.8	1	122.66	122.66		
	PLT1055	E250 AB	PL25*420	640.0	2	52.75	105.50		
	PLT1097	E250 AB	PL10*98	300.0	2	2.06	4.12		
	PLT3354	E250 AB	PL10*98	300.0	2	2.06	4.12		
MH1-VB76	M1121	E250 AB	ISA90X90X10	650.5	1	8.68	8.68	2	17.36
MH1-VB77	M1116	E250 AB	ISMC300	1999.9	1	71.23	71.23		258.69
	M1118	E250 AB	ISMC300	1999.9	1	71.23	71.23		
	PLT86	E250 AB	PL25*420	640.0	2	52.75	105.50		
	PLT1128	E250 AB	PL10*98	350.0	4	2.68	10.72		
MH1-VB78	M1115	E250 AB	ISMC300	2065.1	1	75.06	75.06	1	286.34
	M1117	E250 AB	ISMC300	2065.1	1	75.06	75.06		
	PLT86	E250 AB	PL25*420	640.0	2	52.75	105.50		
	PLT1128	E250 AB	PL10*98	350.0	4	2.68	10.72		
GRAND TOTAL							901.46		



- NOTES:
01. ALL DIMENSIONS ARE IN MILLIMETERS & LEVELS ARE IN METER U.N.O.
 02. THIS DRAWING IS NOT TO BE SCALED, ONLY WRITTEN DIMENSIONS ARE TO BE FOLLOWED.
 03. ALL BUTT WELDS SHALL BE OF FULL PENETRATION.
 04. Use 10.9 BOLT GRADE UNLESS NOTED OTHERWISE MENTIONED IN ERECTION DRAWING.

MINIMUM WELD SIZE FOR VARIOUS PLATE						
PLATE SIZE	8 mm & 10 mm	12 mm	16 mm & 20 mm	25 mm	28 mm & 32 mm	36 mm & 40 mm
WELD SIZE	6 mm	10 mm	12 mm	16 mm	20 mm	25 mm

REFERENCE DOCUMENTS / DRAWINGS				
00	ISSUE FOR CONSTRUCTION	SP	KJ	YG
No	DESCRIPTION	DRN	CHECKED	APPROVED

PAT-IP-FGD-LSSY-100-1001				
MARKING DRAWINGS OF LS STOCK YARD SHED - MH-1				
DRAWING NO.				

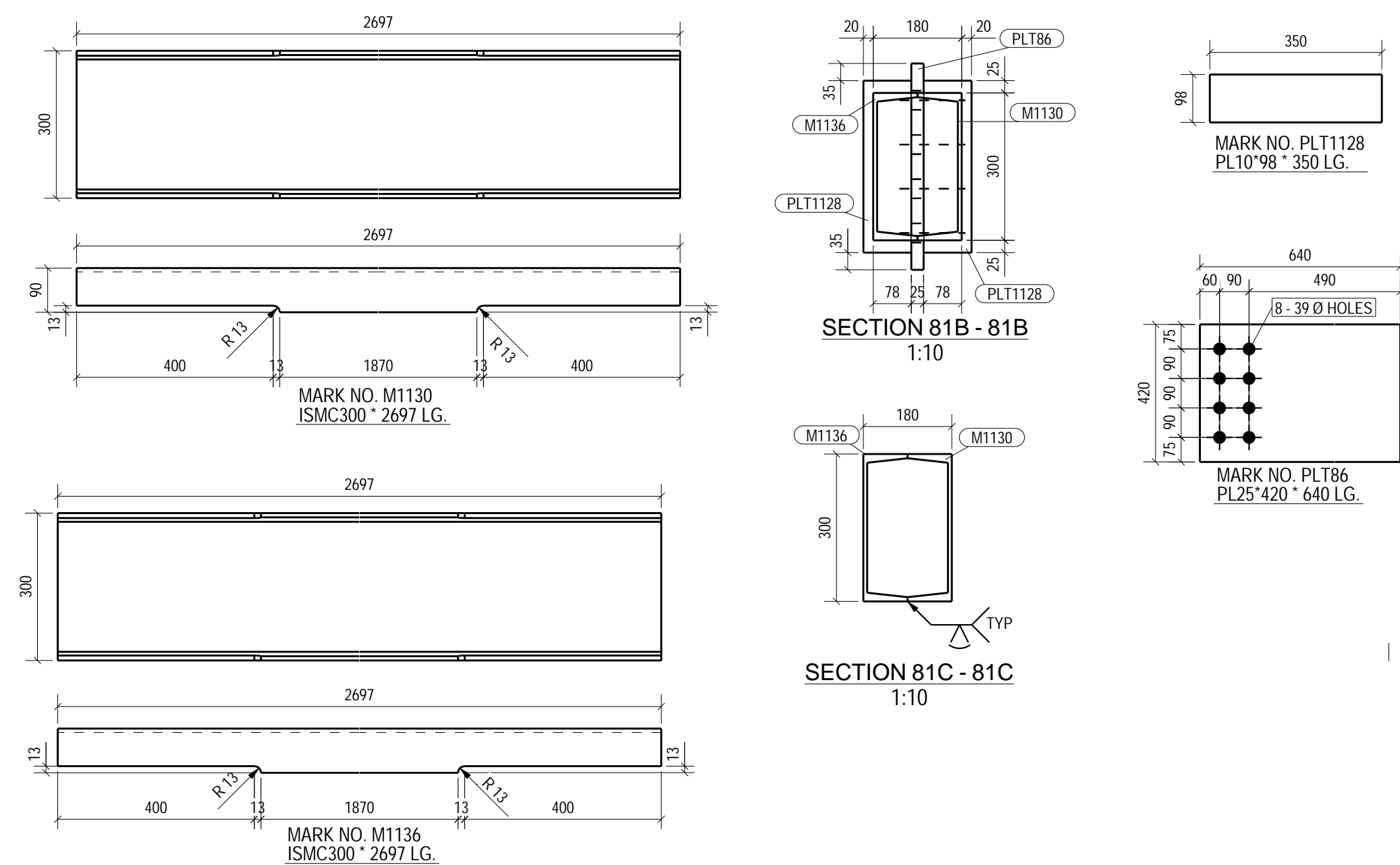
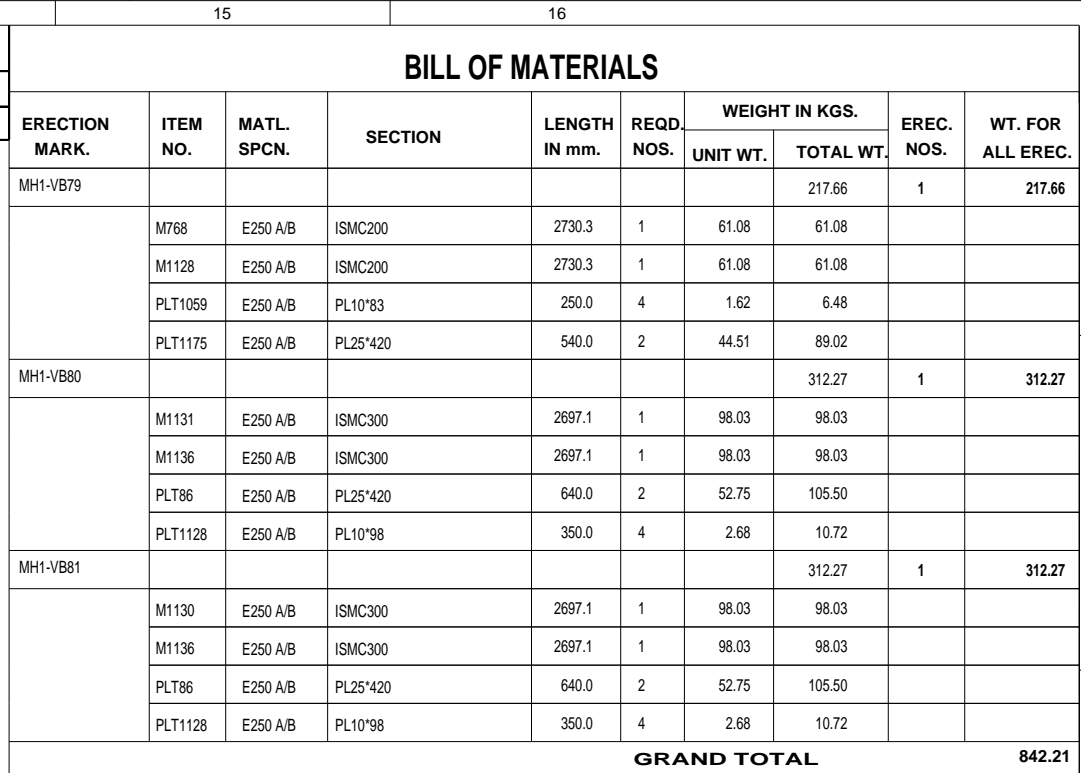
REFERENCE DOCUMENTS / DRAWINGS				
CUSTOMER PROJECT:				
NTPC-3x800MW PATRATU SUPER THERMAL POWER PROJECT				


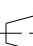


EPC CONTRACTOR:			SCALE:-	
BHARAT HEAVY ELECTRICALS LTD			AS SHOWN	
POWER SECTOR WESTERN REGION, NAGPUR				

DETAILER:			BANKAPUR ENGINEERS & CONSULTANTS PVT. LTD.	
FABRICATION CONTRACTOR:			BHARAT HEAVY ELECTRICALS LTD.	
			FSIP, JAGDISHPUR	

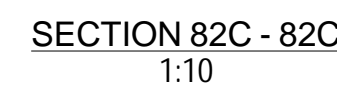
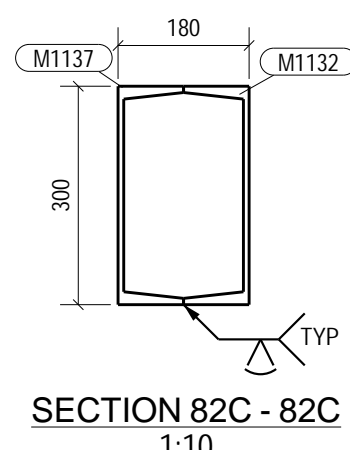
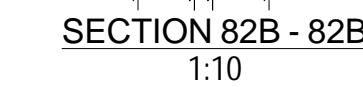
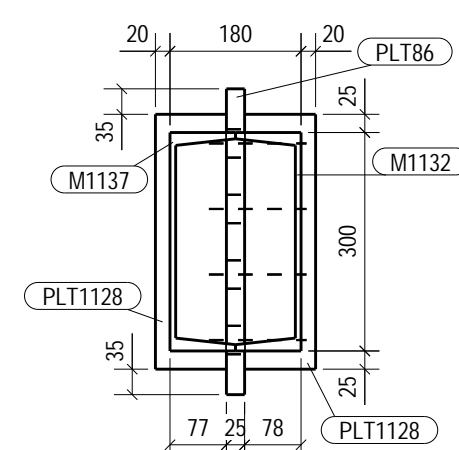
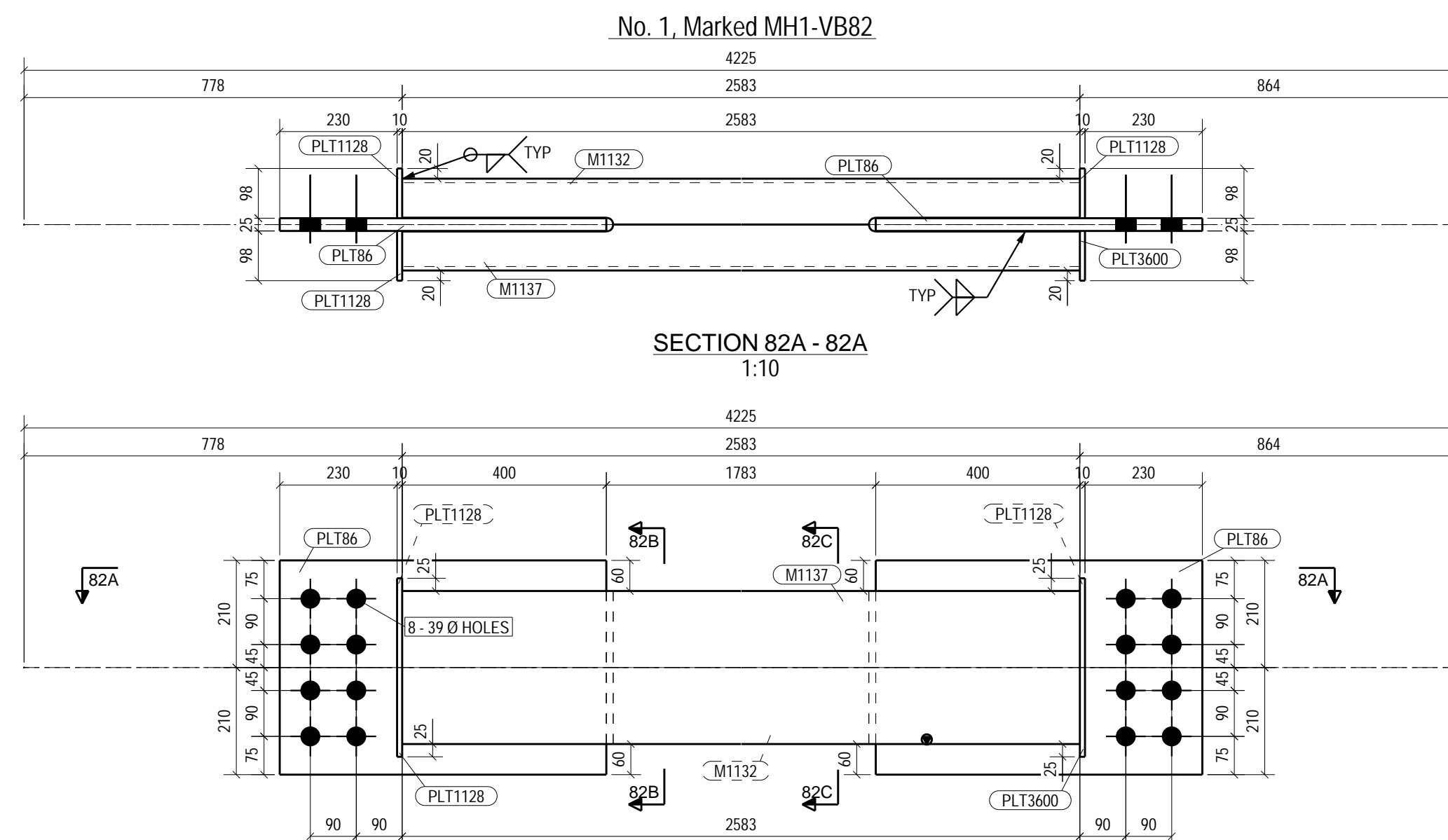
DRAWING TITLE:-				
DETAIL DRAWINGS FOR LS STOCK YARD SHED				
DRAWING DESCRIPTION:-				
DETAIL DRAWINGS FOR VBR (PART-2) - MH-1				
DRAWING DOCUMENT NO.:-				
PAT-IP-FGD-LSSY-999-1011				

NAME	DATE	DRAWING TITLE:-	DETAIL DRAWINGS FOR LS STOCK YARD SHED
DRN	SP	27.12.2022	27.12.2022
CHD	KJ	27.12.2022	27.12.2022
APPD	YG	27.12.2022	27.12.2022
SHEET		06 OF 10	REV:- 00



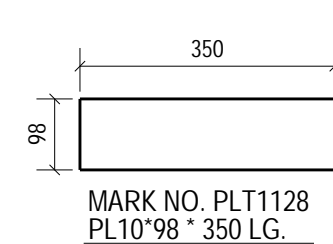
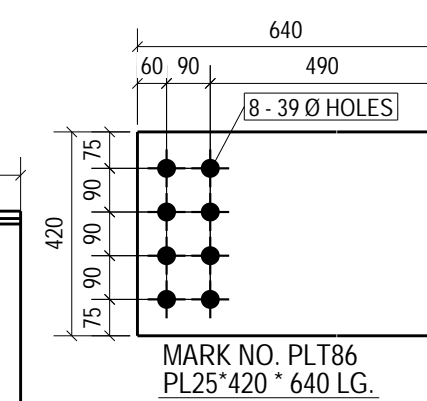
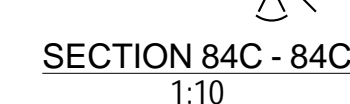
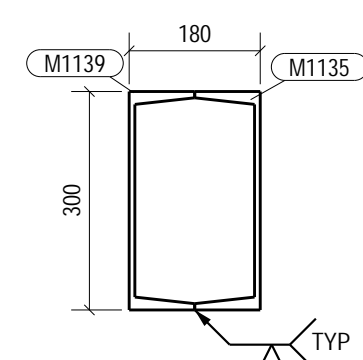
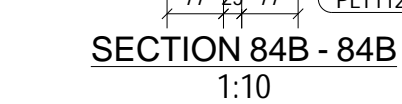
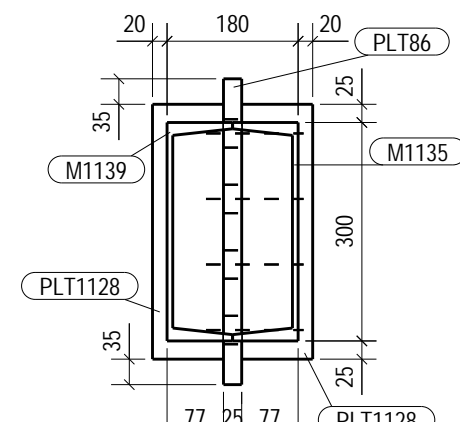
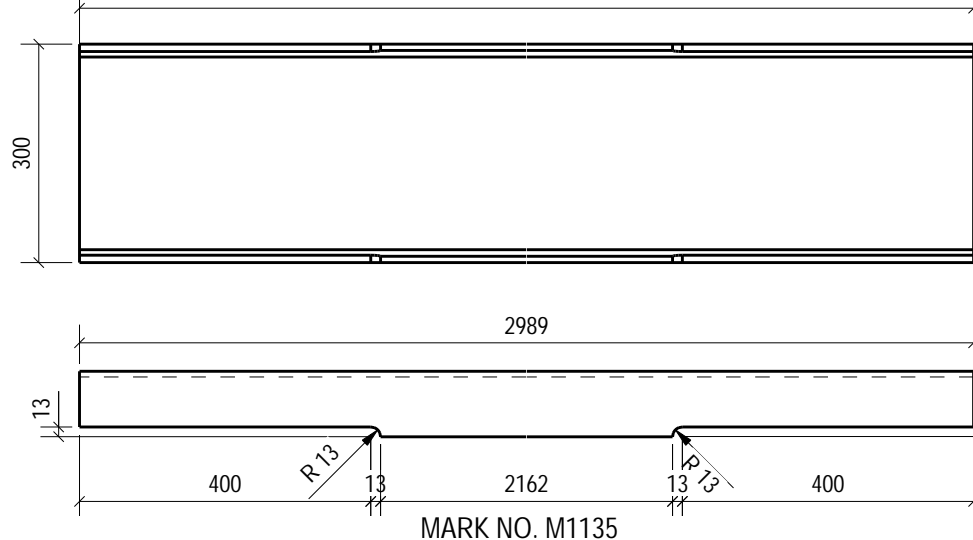
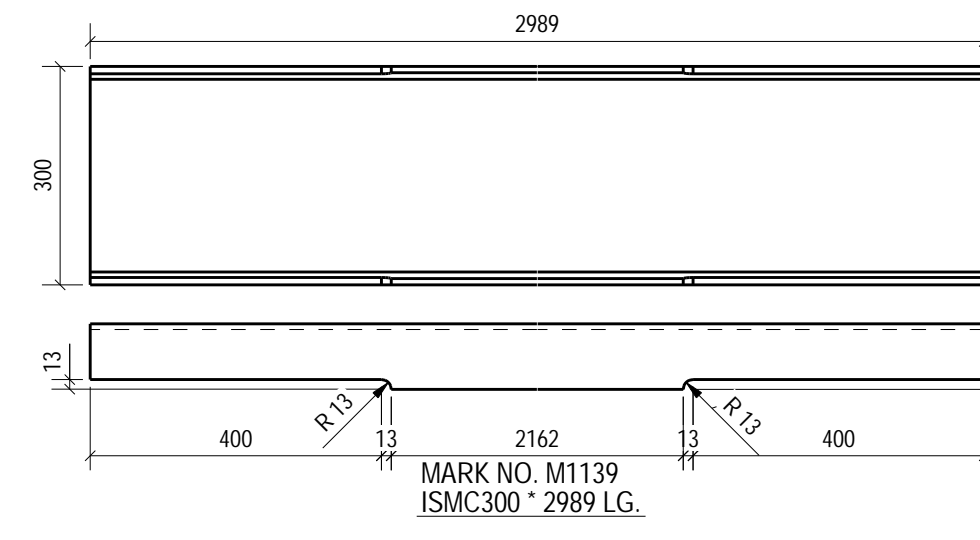
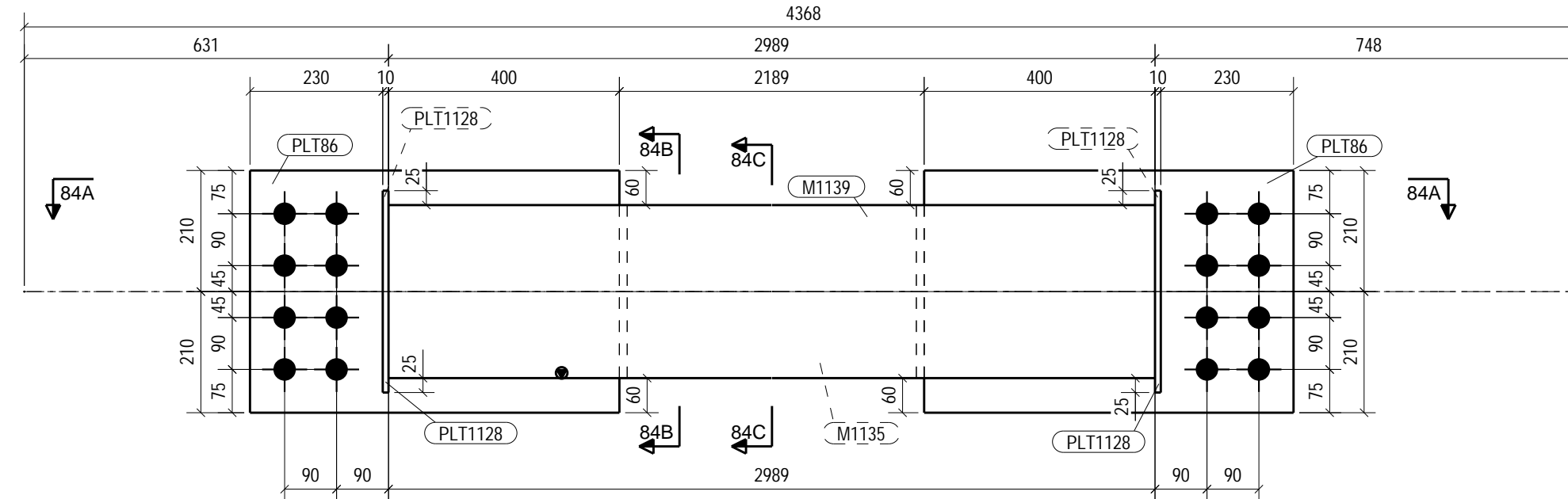
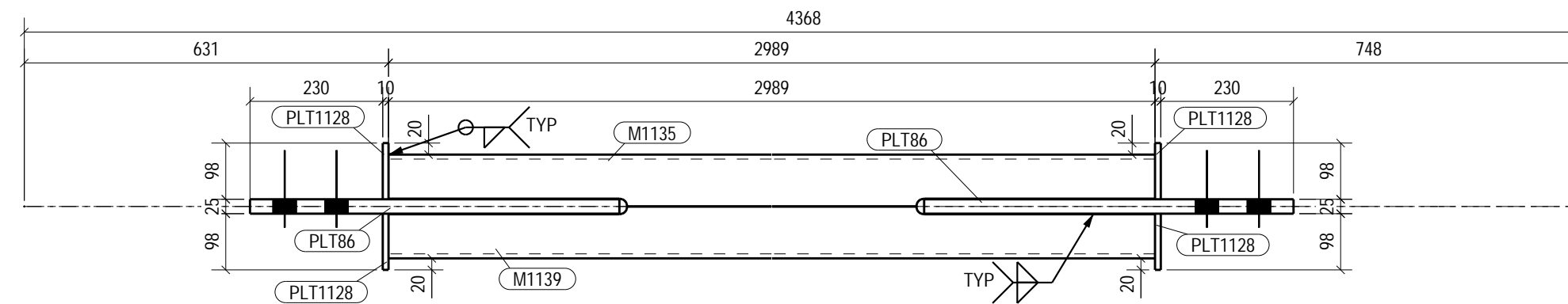
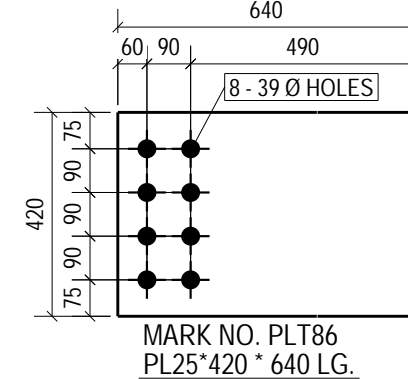
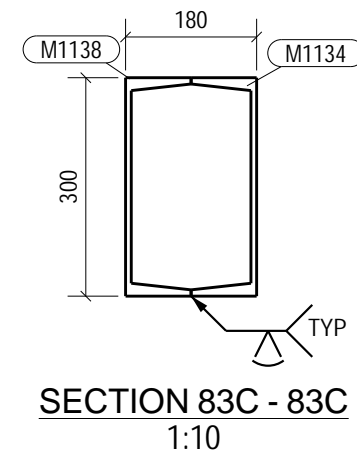
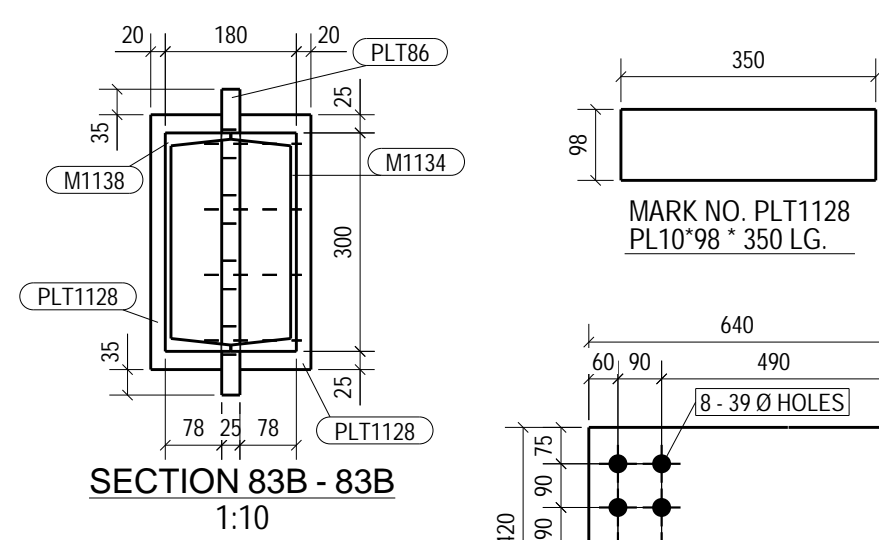
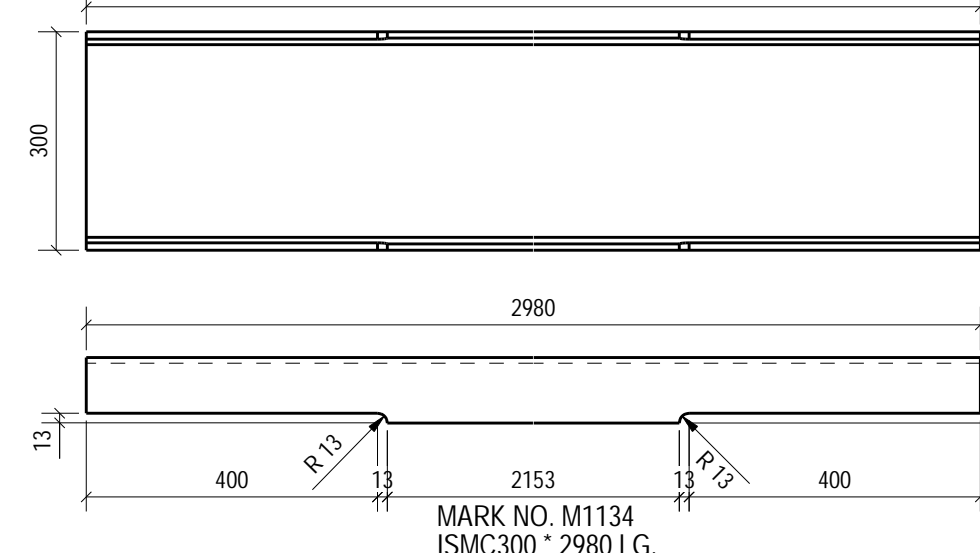
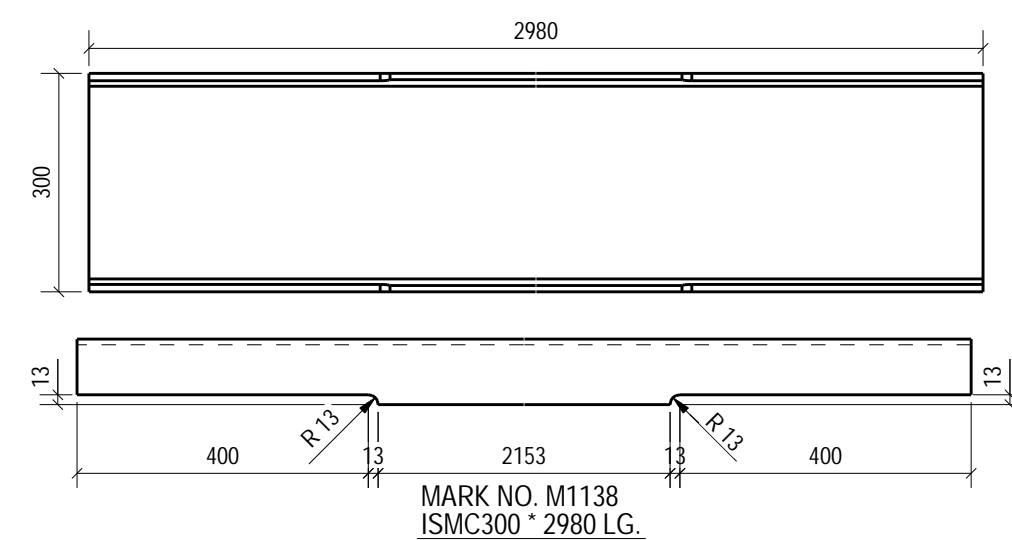
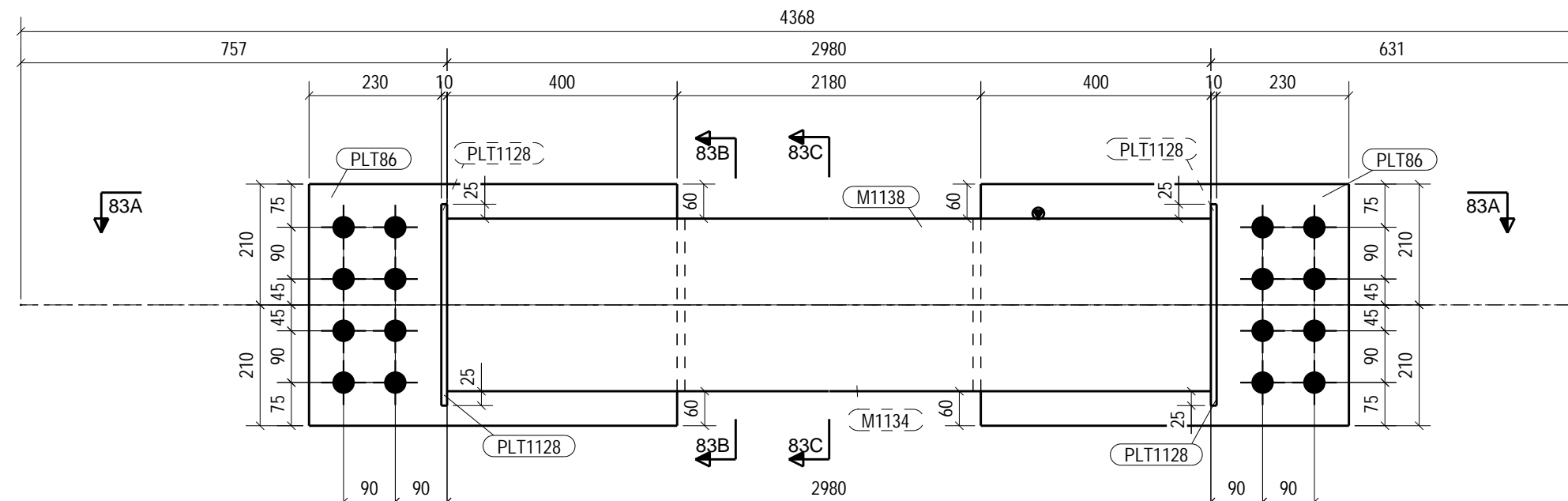
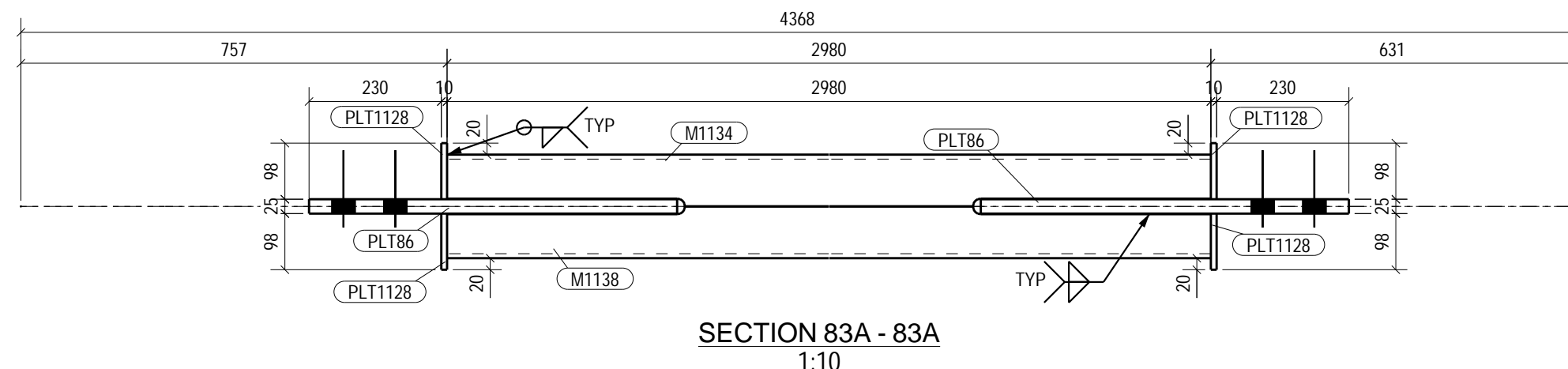
NOTES:							
01. ALL DIMENSIONS ARE IN MILLIMETERS & LEVELS ARE IN METER U.N.O.							
02. THIS DRAWING IS NOT TO BE SCALED ONLY WRITTEN DIMENSIONS ARE TO BE FOLLOWED.							
03. ALL BUTT WELDS SHALL BE OF FULL PENETRATION.							
04. USE 10.9 BOLT GRADE UNLESS NOTED OTHERWISE MENTIONED IN ERECTION DRAWING.							
MINIMUM WEELD SIZE FOR VARIOUS PLATE							
PLATE SIZE	8 mm & 10 mm	12 mm	16 mm & 20 mm	25 mm	28 mm & 32 mm	36 mm & 40 mm	45 mm & 50 mm
WEELD SIZE	6 mm	10 mm	12 mm	16 mm	20 mm	25 mm	25 mm
00	ISSUE FOR CONSTRUCTION			SP	KJ	YG	27.12.2022
No	DESCRIPTION			DRN	CHECKED	APPROVED	DATE
PAT-IP-FGD-LSSY-100-1001	MARKING DRAWINGS OF LS STOCK YARD SHED - MH-1						00
DRAWING NO.				DRAWING TITLE			REV
REFERENCE DOCUMENTS / DRAWINGS							
CUSTOMER PROJECT: NTPC-x3&800MW PATRATRU SUPER THERMAL POWER PROJECT							
EPC CONTRACTOR:	BHARAT HEAVY ELECTRICALS LTD POWER SECTOR WESTERN REGION, NAGPUR						SCALE- AS SHOWN
DRAWER:		BANKAPUR ENGINEERS & CONSULTANTS PVT. LTD.					 
FABRICATOR CONTRACTOR:							
 भारत वी इलेक्ट्रिकल्स लिमिटेड BHARAT HEAVY ELECTRICALS LTD. FISP, JAGDISHPUR							
NAME	DATE	DRAWING TITLE :-					
DRN	SP	27.12.2022	DETAIL DRAWINGS FOR LS STOCK YARD SHED				
			DRAWING DESCRIPTION :-				
CHD	KJ	27.12.2022	DETAIL DRAWINGS FOR VBR-(PART-2) - MH-1				
APPD	YG	27.12.2022	DRAWING DOCUMENT NO. :- PAT-IP-FGD-LSSY-999-1011		SHEET	OF 10	REV. : 00

GRID LOCATION		
MH1-VB82	24-25/C'	+9.160
MH1-VB83	24-25/C'	+6.335
MH1-VB84	24-25/C'	+6.335



12		
SUMMARY OF STEEL		
SR. No.	DESCRIPTION	TOTAL WT.
1	ISMC300	621.69
2	PLT 10 THK	32.15
3	PLT 25 THK	316.51
TOTAL IN KGS.		970.34

13			14		
FIELD BOLT SUMMARY					
TOTAL QTY	UNIT QTY	BOLT DIA	BOLT GRADE	LENGTH	REMARKS
48	48	36	10.9	110	Site

[illegible]

NOTES:

01. ALL DIMENSIONS ARE IN MILLIMETERS & LEVELS ARE IN METER U.N.O.
02. THIS DRAWING IS NOT TO BE SCALED, ONLY WRITTEN DIMENSIONS ARE TO BE FOLLOWED.
03. ALL BUTT WELDS SHALL BE OF FULL PENETRATION.
04. Use 10.9 BOLT GRADE UNLESS NOTED OTHERWISE MENTIONED IN ERECTION DRAWING.

MINIMUM WELD SIZE FOR VARIOUS PLATE							
PLATE SIZE	8 mm & 10 mm	12 mm	16 mm & 20 mm	25 mm	28 mm & 32 mm	36 mm & 40 mm	45 mm & 50 mm
WELD SIZE	6 mm	10 mm	12 mm	16 mm	20 mm	25 mm	25 mm

00	ISSUE FOR CONSTRUCTION	SP	KJ	YG	27.12.2022
No	DESCRIPTION	DRN	CHECKED	APPROVED	DATE

PAT-IP-FGD-LSSY-100-1001	MARKING DRAWINGS OF LS STOCK YARD SHED - MH-1	00
DRAWING NO.	DRAWING TITLE	REV
REFERENCE DOCUMENTS / DRAWINGS		


CUSTOMER/PROJECT:
NTPC-3x800MW PATRATU SUPER THERMAL POWER PROJECT

EPC CONTRACTOR:	BHARAT HEAVY ELECTRICALS LTD POWER SECTOR WESTERN REGION, NAGPUR	SCALE:- AS SHOWN
-----------------	--	---------------------

DETAILER: BEC <small>ENGINEERING & CONSULTANTS PVT. LTD.</small>	BANKAPUR ENGINEERS & CONSULTANTS PVT. LTD.	
--	--	---

FABRICATION CONTRACTOR:

પાણી સેવી દલેશિવજીયા નિમિટેદ

 **BHARAT HEAVY ELECTRICALS LTD.**
FSIP, JAGDISHPUR

	NAME	DATE	DRAWING TITLE :-
--	------	------	------------------

DRN	SP	27.12.2022	DETAIL DRAWINGS FOR LS STOCK YARD SHED
			DRAWING

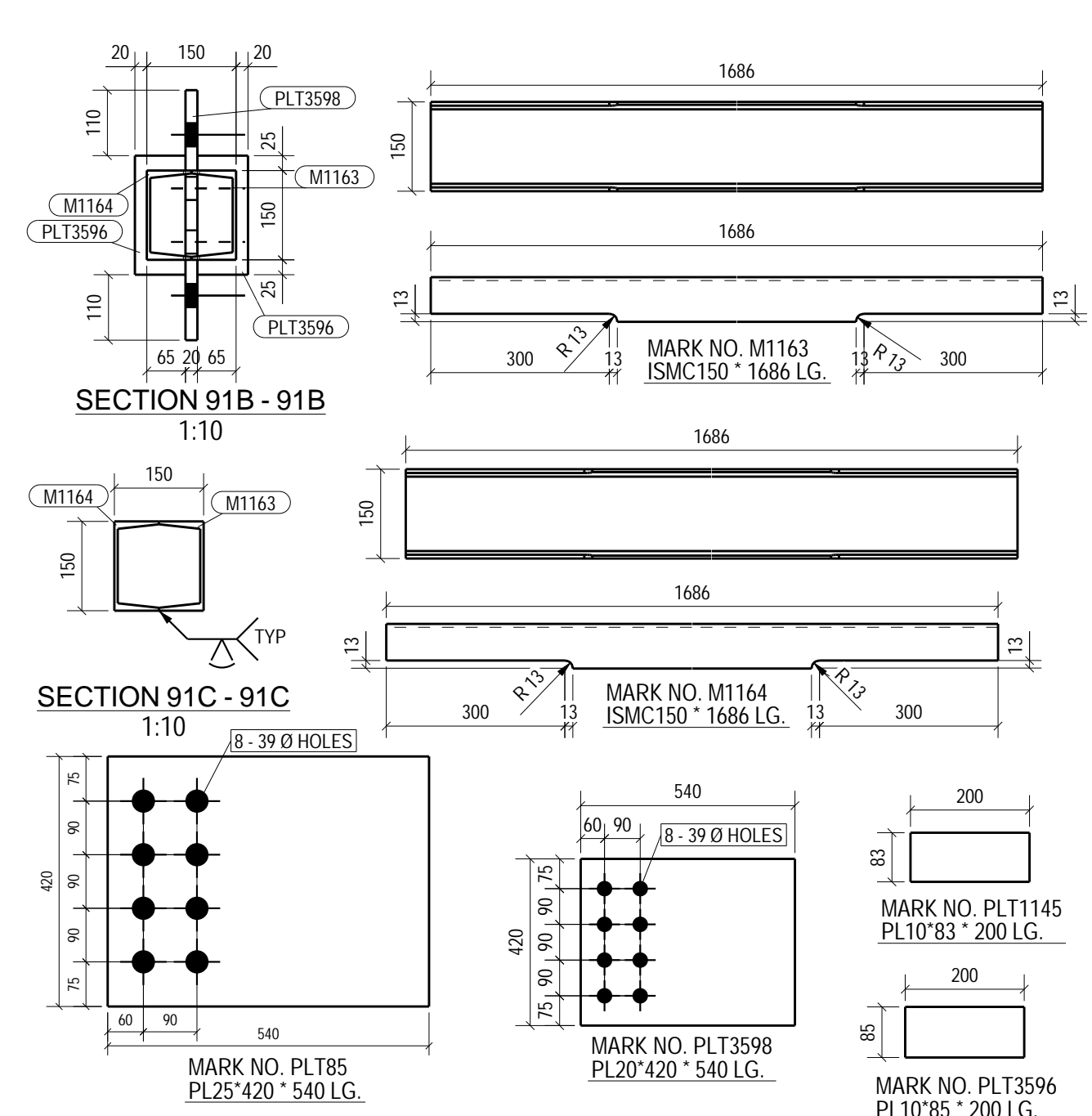
CHD	KJ	27.12.2022	DESCRIPTION :- DETAIL DRAWINGS FOR VBR-(PART-2) - MH-1
-----	----	------------	---

APPD	YG	27.12.2022	DRAWING DOCUMENT NO. :- PAT-IP-FGD-LSSY-999-1011	SHEET - 08 OF 10	REV.: 00
------	----	------------	---	------------------	----------

CHG	NO	DATE/CELL	DRAWING DOCUMENT NO. :- PAT-IP-FGD-LSSY-999-1011			SHEET - 09 OF 10	REV.: 00
APPD	YG	27.12.2022					

SIZE-A

				15				16				
BILL OF MATERIALS												
ERECTION MARK.	ITEM NO.	MAT'L SPCN.	SECTION	LENGTH IN mm.	RECD. NO.	WEIGHT IN KGS.		ERECTION NOS.	WT. FOR ALL EREC.			
						UNIT WT.	TOTAL WT.					
MHI-1589							165.77	1	165.77			
	M1160	E250 A/B	ISMC150	2140.1	1	35.78	35.78					
	M1160	E250 A/B	ISMC150	2140.1	1	35.78	35.78					
	PLT185	E250 A/B	PL25*400	540.0	2	44.51	89.02					
	PLT1145	E250 A/B	PL10*93	200.0	4	1.30	5.18					
MHI-1590							145.30	1	145.30			
	M2461	E250 A/B	ISMC125	4373.4	1	57.33	57.33					
	M2462	E250 A/B	ISMC125	4373.4	1	57.33	57.33					
	PLT1040	E250 A/B	PL16*240	450.0	2	13.56	27.13					
	PLT1056	E250 A/B	PL10*72	155.0	4	0.88	3.50					
MHI-1591							141.76	1	141.76			
	M1163	E250 A/B	ISMC150	1698.0	1	28.19	28.19					
	M1164	E250 A/B	ISMC150	1698.0	1	28.19	28.19					
	PLT185	E250 A/B	PL25*400	540.0	1	44.51	44.51					
	PLT1145	E250 A/B	PL10*93	200.0	2	1.30	2.59					
	PLT3596	E250 A/B	PL10*85	200.0	2	1.33	2.67					
	PLT3598	E250 A/B	PL20*400	540.0	1	35.61	35.61					
MHI-1592							140.57	1	140.57			
	M2484	E250 A/B	ISMC150	1650.5	1	27.60	27.60					
	M2485	E250 A/B	ISMC150	1650.5	1	27.60	27.60					
	PLT185	E250 A/B	PL25*400	540.0	1	44.51	44.51					
	PLT1145	E250 A/B	PL10*93	200.0	2	1.30	2.59					
	PLT3596	E250 A/B	PL10*85	200.0	2	1.33	2.67					
	PLT3598	E250 A/B	PL20*400	540.0	1	35.61	35.61					
GRAND TOTAL									593.40			

[illegible]